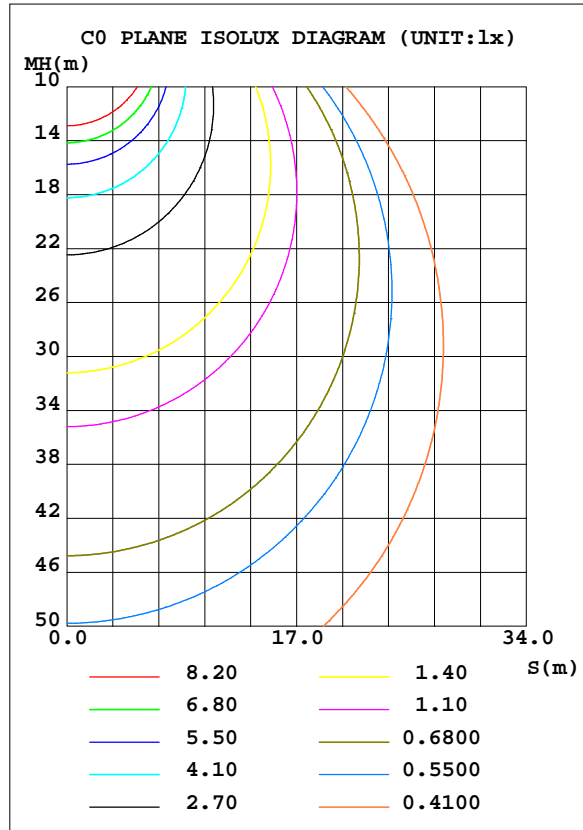
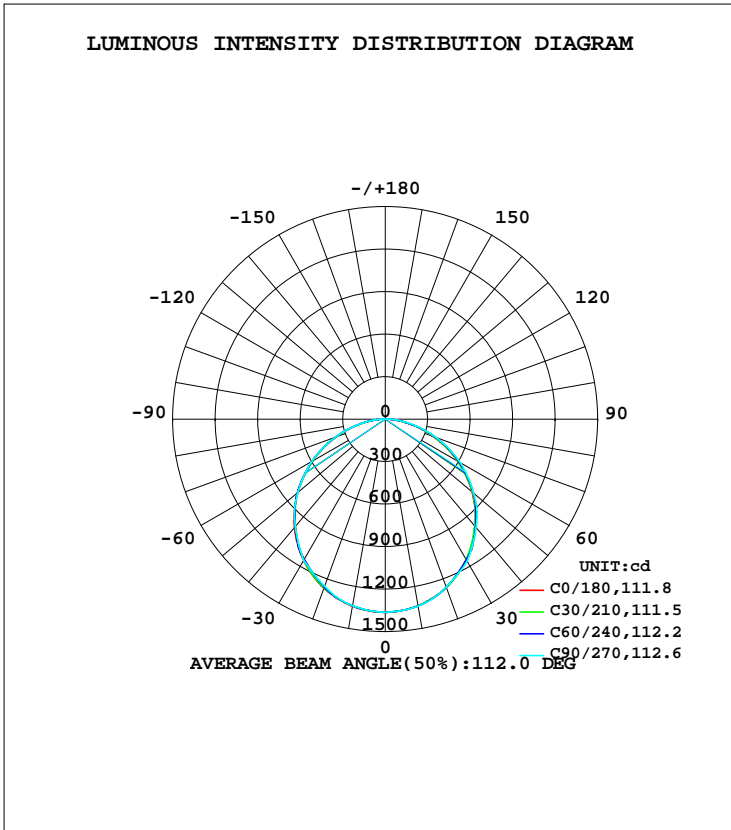


**LUMINAIRE PHOTOMETRIC TEST REPORT**

Test:U:220.0V I:0.2053A P:43.66W PF:0.9668 Freq:49.99Hz Lamp Flux:3888.2x1 lm		
NAME: UGR19 595*595 Panel Light	TYPE:	WEIGHT:
SPEC.:	DIM.: 595*595mm	SERIAL No.:
MFR.:	SUR.:551*551mm	Shielding Angle:

DATA OF LAMP		PHOTOMETRIC DATA			
MODEL		I <sub>max</sub> (cd)	1363	S/MH(C0/180)	1.26
NOMINAL POWER(W)	45	LOR(%)	100.0	S/MH(C90/270)	1.25
RATED VOLTAGE(V)	220	TOTAL FLUX(lm)	3888.2	η UP, DN(C0-180)	0.0,50.2
NOMINAL FLUX(lm)	3888.2	CIE CLASS	DIRECT	η UP, DN(C180-360)	0.0,49.8
LAMPS INSIDE	1	η up(%)	0.0	CIBSE SHR NOM	1.25
TEST VOLTAGE(V)	220.1	η down(%)	100.0	CIBSE SHR MAX	1.35



C Range: 0 - 360DEG  
 C Interval: 5.0DEG  
 Test Speed: HIGH  
 Temperature:25.3DEG  
 Operators:He Xueping  
 Test Date:2017-06-15

γ Range: 0 - 90DEG  
 γ Interval: 0.5DEG  
 Test System:EVERFINE GO-2000A\_V1 SYSTEM V2.0.354  
 Humidity:65.0%  
 Test Distance:9.300m [K=1.0000]  
 Remarks:

ZONAL FLUX DIAGRAM

ZONAL FLUX DIAGRAM:

γ	C0	C45	C90	C135	C180	C225	C270	C315	γ	Φ zone	Φ total	%lum,lamp
10	1336	1337	1340	1340	1340	1337	1337	1334	0- 10	128.8	128.8	3.31,3.31
20	1262	1265	1260	1270	1269	1266	1255	1261	10- 20	368.7	497.5	12.8,12.8
30	1144	1139	1158	1146	1153	1141	1151	1134	20- 30	556.9	1054	27.1,27.1
40	987.9	995.8	997.9	1002	997.5	996.4	989.1	988.2	30- 40	671.5	1726	44.4,44.4
50	800.7	804.1	815.5	811.3	808.4	804.5	805.8	795.2	40- 50	696.2	2422	62.3,62.3
60	588.1	595.3	610.4	601.2	595.8	594.6	600.8	586.1	50- 60	628.2	3050	78.4,78.4
70	362.9	375.7	385.5	379.9	370.7	374.4	377.6	366.9	60- 70	480.1	3530	90.8,90.8
80	148.8	159.3	167.4	163.5	157.2	160.3	161.9	152.3	70- 80	278.8	3809	98,98
90	0	0.0001	0	0.0001	0	0.0001	0	0.0001	80- 90	79.11	3888	100,100
100									90-100			
110									100-110			
120									110-120			
130									120-130			
140									130-140			
150									140-150			
160									150-160			
170									160-170			
180									170-180			
DEG	LUMINOUS INTENSITY:cd									UNIT:lm		

Conical surface Flux(90deg): 2076.6 lm

%lum = 53.4%  
 %lamp = 53.4%

Conical surface Flux(120deg): 3050.2 lm

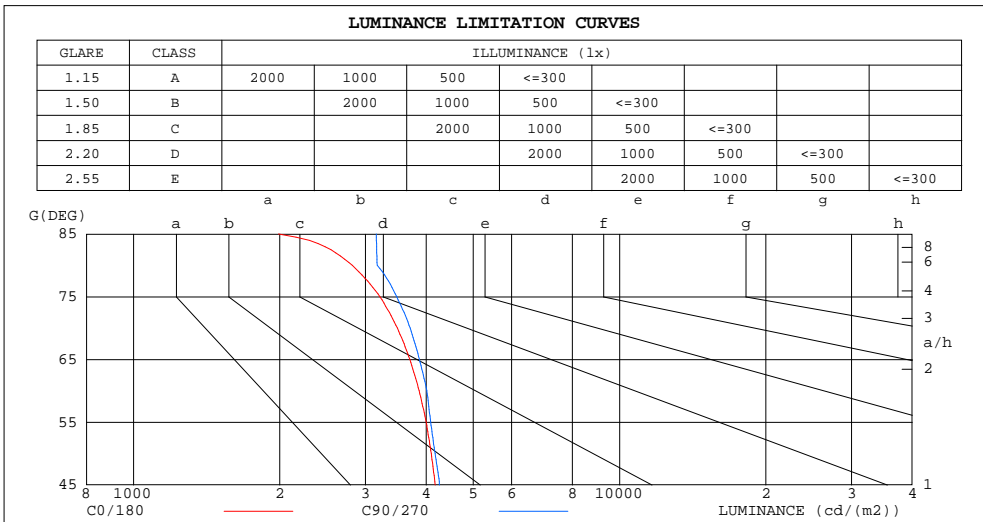
%lum = 78.4%  
 %lamp = 78.4%

C Range: 0 - 360DEG  
 C Interval: 5.0DEG  
 Test Speed: HIGH  
 Temperature:25.3DEG  
 Operators:He Xueping  
 Test Date:2017-06-15

γ Range: 0 - 90DEG  
 γ Interval: 0.5DEG  
 Test System:EVERFINE GO-2000A\_V1 SYSTEM V2.0.354  
 Humidity:65.0%  
 Test Distance:9.300m [K=1.0000]  
 Remarks:

LUMINANCE LIMITATION CURVES

Test:U:220.0V I:0.2053A P:43.66W PF:0.9668 Freq:49.99Hz Lamp Flux:3888.2x1 lm		
NAME: 595*595 Panel Light	TYPE:	WEIGHT:
SPEC.:	DIM.: 595*595mm	SERIAL No.:
MFR.:	SUR.:551*551mm	Shielding Angle:



LUMINANCE cd/(m2)		
G(DEG)	C0/180	C90/270
85	1988	3159
80	2818	3171
75	3214	3479
70	3490	3708
65	3704	3876
60	3869	4016
55	4001	4089
50	4098	4173
45	4178	4260

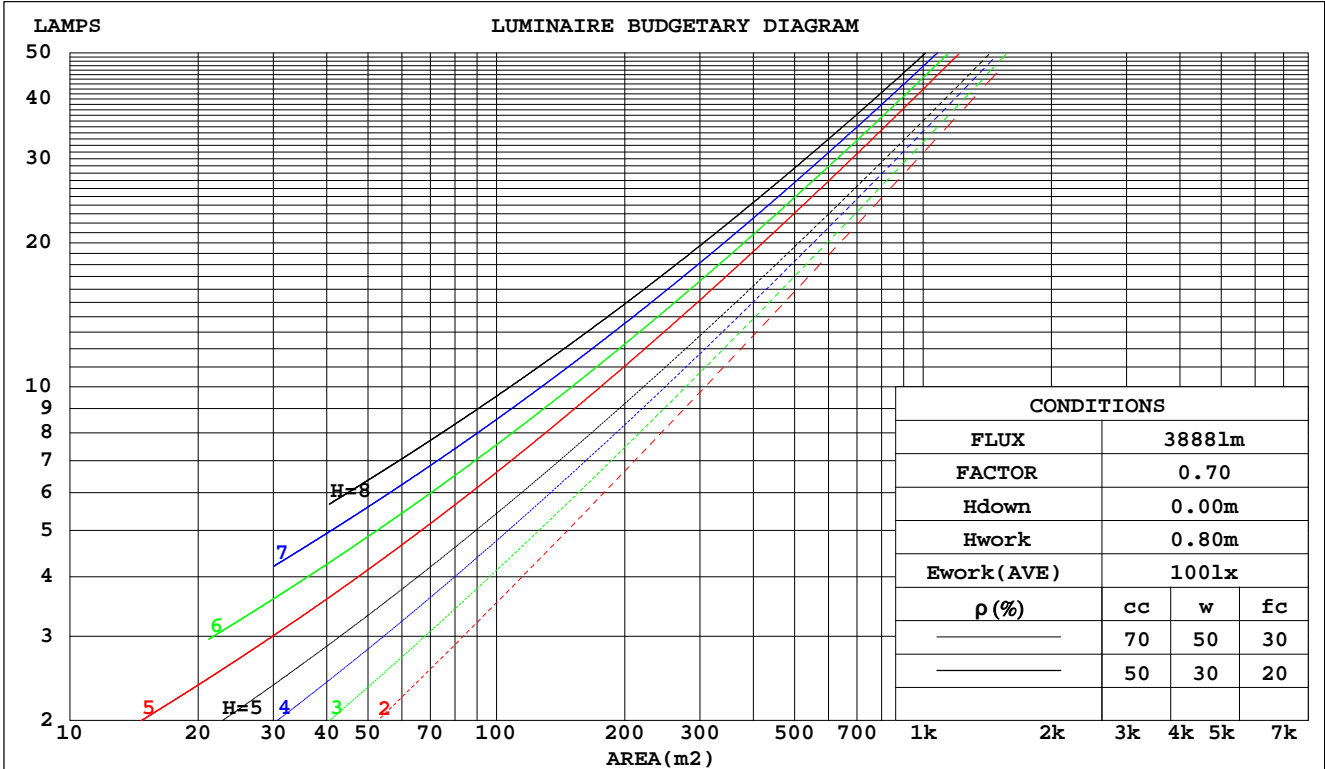
C Range: 0 - 360DEG  
 C Interval: 5.0DEG  
 Test Speed: HIGH  
 Temperature:25.3DEG  
 Operators:He Xueping  
 Test Date:2017-06-15

γ Range: 0 - 90DEG  
 γ Interval: 0.5DEG  
 Test System:EVERFINE GO-2000A\_V1 SYSTEM V2.0.354  
 Humidity:65.0%  
 Test Distance:9.300m [K=1.0000]  
 Remarks:

**CU AND LUMINAIRE BUDGETARY ESTIMATE DIAGRAM**

Test:U:220.0V I:0.2053A P:43.66W PF:0.9668 Freq:49.99Hz Lamp Flux:3888.2x1 lm		
NAME: 595*595 Panel Light	TYPE:	WEIGHT:
SPEC.:	DIM.: 595*595mm	SERIAL No.:
MFR.:	SUR.:551*551mm	Shielding Angle:

<b>ρcc</b>	80%			70%			50%			30%			10%			0
<b>ρw</b>	50%	30%	10%	50%	30%	10%	50%	30%	10%	50%	30%	10%	50%	30%	10%	0
<b>ρfc</b>	20%			20%			20%			20%			20%			0
<b>RCR</b>	RCR:Room Cavity Ratio      Coefficients of Utilization(CU)															
0.0	1.19	1.19	1.19	1.16	1.16	1.16	1.11	1.11	1.11	1.06	1.06	1.06	1.02	1.02	1.02	1.00
1.0	1.04	.99	.95	1.01	.98	.94	.97	.94	.91	.93	.91	.88	.90	.88	.86	.83
2.0	.90	.83	.78	.88	.82	.77	.85	.79	.75	.82	.77	.73	.78	.75	.71	.69
3.0	.79	.71	.64	.78	.70	.64	.75	.68	.63	.72	.66	.62	.69	.65	.60	.58
4.0	.70	.61	.54	.69	.60	.54	.66	.59	.53	.64	.58	.53	.62	.56	.52	.50
5.0	.63	.54	.47	.61	.53	.47	.59	.52	.46	.57	.51	.46	.55	.50	.45	.43
6.0	.56	.47	.41	.55	.47	.41	.54	.46	.40	.52	.45	.40	.50	.44	.40	.37
7.0	.51	.42	.36	.50	.42	.36	.49	.41	.36	.47	.40	.35	.46	.40	.35	.33
8.0	.47	.38	.32	.46	.38	.32	.45	.37	.32	.43	.37	.32	.42	.36	.31	.29
9.0	.43	.34	.29	.42	.34	.29	.41	.34	.29	.40	.33	.28	.39	.33	.28	.26
10.0	.39	.31	.26	.39	.31	.26	.38	.31	.26	.37	.30	.26	.36	.30	.26	.24



C Range: 0 - 360DEG  
 C Interval: 5.0DEG  
 Test Speed: HIGH  
 Temperature:25.3DEG  
 Operators:He Xueping  
 Test Date:2017-06-15

γ Range: 0 - 90DEG  
 γ Interval: 0.5DEG  
 Test System:EVERFINE GO-2000A\_V1 SYSTEM V2.0.354  
 Humidity:65.0%  
 Test Distance:9.300m [K=1.0000]  
 Remarks:

WEC AND CCEC

Test:U:220.0V I:0.2053A P:43.66W PF:0.9668 Freq:49.99Hz Lamp Flux:3888.2x1 lm		
NAME: 595*595 Panel Light	TYPE:	WEIGHT:
SPEC.:	DIM.: 595*595mm	SERIAL No.:
MFR.:	SUR.:551*551mm	Shielding Angle:

pcc	80%			70%			50%			30%			10%			0
pw	50%	30%	10%	50%	30%	10%	50%	30%	10%	50%	30%	10%	50%	30%	10%	0
pfc	20%			20%			20%			20%			20%			0
RCR	RCR:Room Cavity Ratio						Wall Exitance Coefficients(WEC)									
0.0																
1.0	.312	.178	.056	.305	.174	.055	.292	.167	.053	.280	.161	.052	.268	.156	.050	
2.0	.293	.161	.049	.287	.158	.049	.275	.153	.048	.264	.148	.046	.255	.144	.045	
3.0	.271	.144	.043	.266	.142	.043	.255	.138	.042	.246	.135	.041	.237	.131	.041	
4.0	.250	.130	.038	.245	.128	.038	.236	.125	.037	.227	.122	.037	.219	.119	.036	
5.0	.231	.118	.034	.227	.116	.034	.218	.114	.033	.211	.111	.033	.204	.109	.033	
6.0	.214	.107	.031	.210	.106	.031	.203	.104	.030	.196	.102	.030	.190	.100	.030	
7.0	.199	.098	.028	.196	.098	.028	.189	.096	.028	.183	.094	.027	.178	.092	.027	
8.0	.186	.091	.026	.183	.090	.025	.177	.089	.025	.172	.087	.025	.167	.086	.025	
9.0	.174	.084	.024	.172	.084	.023	.166	.082	.023	.161	.081	.023	.157	.080	.023	
10.0	.164	.079	.022	.161	.078	.022	.157	.077	.022	.152	.076	.021	.148	.074	.021	

pcc	80%			70%			50%			30%			10%			0
pw	50%	30%	10%	50%	30%	10%	50%	30%	10%	50%	30%	10%	50%	30%	10%	0
pfc	20%			20%			20%			20%			20%			0
RCR	RCR:Room Cavity Ratio						Ceiling Cavity Exitance Coefficients(CCEC)									
0.0	.190	.190	.190	.163	.163	.163	.111	.111	.111	.064	.064	.064	.020	.020	.020	
1.0	.180	.156	.134	.154	.134	.115	.106	.092	.080	.061	.053	.046	.019	.017	.015	
2.0	.172	.132	.098	.148	.114	.085	.101	.079	.059	.058	.046	.035	.019	.015	.011	
3.0	.165	.114	.074	.141	.099	.064	.097	.069	.045	.056	.040	.027	.018	.013	.009	
4.0	.157	.101	.058	.135	.087	.051	.093	.061	.036	.054	.036	.021	.017	.012	.007	
5.0	.150	.091	.047	.128	.078	.041	.088	.055	.029	.051	.032	.017	.017	.010	.006	
6.0	.142	.082	.039	.122	.071	.034	.084	.050	.024	.049	.029	.014	.016	.010	.005	
7.0	.136	.075	.033	.117	.065	.029	.081	.046	.020	.047	.027	.012	.015	.009	.004	
8.0	.129	.070	.029	.111	.060	.025	.077	.042	.018	.045	.025	.011	.014	.008	.003	
9.0	.123	.065	.025	.106	.056	.022	.073	.039	.016	.043	.023	.009	.014	.008	.003	
10.0	.117	.060	.022	.101	.052	.020	.070	.037	.014	.041	.022	.008	.013	.007	.003	

C Range: 0 - 360DEG  
 C Interval: 5.0DEG  
 Test Speed: HIGH  
 Temperature:25.3DEG  
 Operators:He Xueping  
 Test Date:2017-06-15

γ Range: 0 - 90DEG  
 γ Interval: 0.5DEG  
 Test System:EVERFINE GO-2000A\_V1 SYSTEM V2.0.354  
 Humidity:65.0%  
 Test Distance:9.300m [K=1.0000]  
 Remarks:

UGR(Unified Glare Rating) Table

Test:U:220.0V I:0.2053A P:43.66W PF:0.9668 Freq:49.99Hz Lamp Flux:3888.2x1 lm										
NAME: 595*595 Panel Light					TYPE:			WEIGHT:		
SPEC.:					DIM.: 595*595mm			SERIAL No.:		
MFR.:					SUR.:551*551mm			Shielding Angle:		
ceiling/cavity	0.7	0.7	0.5	0.5	0.3	0.7	0.7	0.5	0.5	0.3
walls	0.5	0.3	0.5	0.3	0.3	0.5	0.3	0.5	0.3	0.3
working plane	0.2	0.2	0.2	0.2	0.2	0.2	0.2	0.2	0.2	0.2
Room dimensions	Viewed crosswise					Viewed endwise				
x = 2H y = 2H	12.9	14.5	13.2	14.7	14.9	13.1	14.6	13.3	14.8	15.0
3H	14.4	15.8	14.7	16.1	16.3	14.6	16.1	14.9	16.3	16.5
4H	15.0	16.3	15.3	16.6	16.9	15.3	16.6	15.6	16.9	17.1
6H	15.4	16.7	15.7	16.9	17.2	15.8	17.0	16.1	17.3	17.6
8H	15.5	16.7	15.8	17.0	17.3	15.9	17.1	16.3	17.4	17.7
12H	15.5	16.7	15.9	17.0	17.3	16.0	17.2	16.4	17.5	17.8
4H 2H	13.6	14.9	13.9	15.2	15.4	13.7	15.0	14.0	15.3	15.5
3H	15.2	16.4	15.6	16.7	17.0	15.4	16.6	15.8	16.9	17.2
4H	15.9	17.0	16.3	17.3	17.7	16.2	17.3	16.6	17.6	17.9
6H	16.5	17.4	16.9	17.8	18.1	16.8	17.8	17.2	18.1	18.5
8H	16.6	17.5	17.0	17.9	18.3	17.0	17.9	17.4	18.3	18.7
12H	16.7	17.5	17.1	17.9	18.3	17.2	18.0	17.6	18.4	18.8
8H 4H	16.2	17.1	16.7	17.5	17.9	16.5	17.4	16.9	17.7	18.1
6H	16.9	17.7	17.4	18.1	18.5	17.2	18.0	17.7	18.4	18.8
8H	17.1	17.8	17.6	18.2	18.7	17.5	18.2	18.0	18.6	19.1
12H	17.3	17.8	17.7	18.3	18.8	17.8	18.4	18.3	18.8	19.3
12H 4H	16.3	17.1	16.7	17.5	17.9	16.5	17.3	16.9	17.7	18.1
6H	17.0	17.6	17.4	18.1	18.5	17.3	17.9	17.7	18.3	18.8
8H	17.2	17.8	17.7	18.3	18.7	17.6	18.2	18.1	18.6	19.1
Variations with the observer position at spacings:										
S = 1.0H	+ 0.1 / - 0.2					+ 0.2 / - 0.2				
1.5H	+ 0.2 / - 0.3					+ 0.2 / - 0.3				
2.0H	+ 0.2 / - 0.2					+ 0.1 / - 0.3				

CIE Pub.117, 3888 lm Total Lamp Luminous Flux Correct (8log(F/F0) = 4.7)

C Range: 0 - 360DEG  
 C Interval: 5.0DEG  
 Test Speed: HIGH  
 Temperature:25.3DEG  
 Operators:He Xueping  
 Test Date:2017-06-15

γ Range: 0 - 90DEG  
 γ Interval: 0.5DEG  
 Test System:EVERFINE GO-2000A\_V1 SYSTEM V2.0.354  
 Humidity:65.0%  
 Test Distance:9.300m [K=1.0000]  
 Remarks:

UTILIZATION FACTORS TABLE

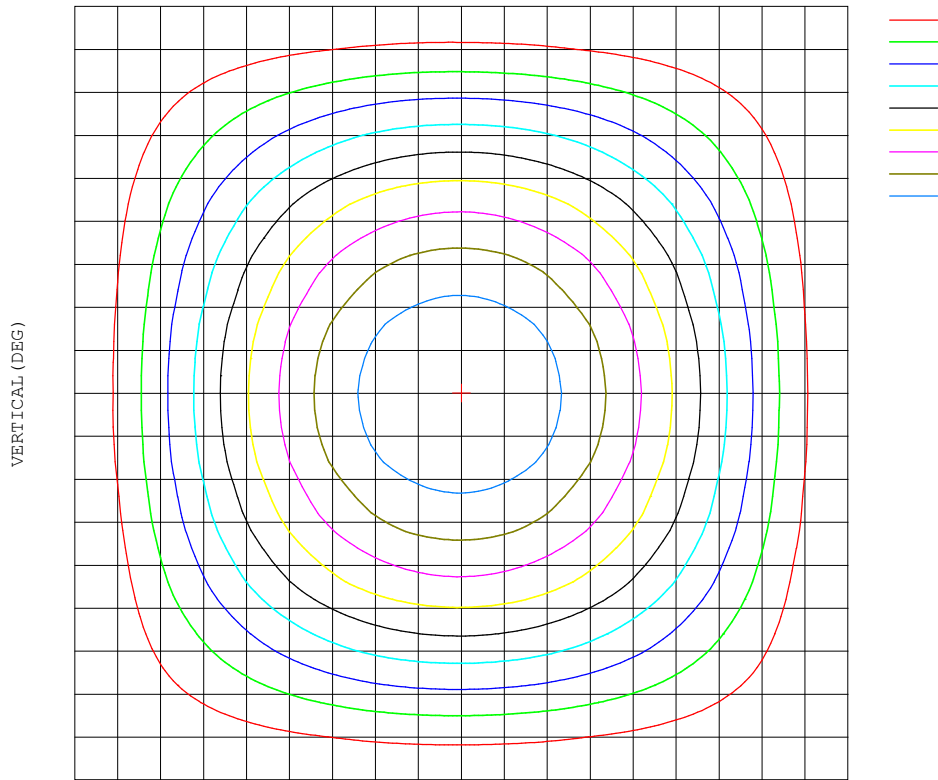
Test:U:220.0V I:0.2053A P:43.66W PF:0.9668 Freq:49.99Hz Lamp Flux:3888.2x1 lm		
NAME: 595*595 Panel Light	TYPE:	WEIGHT:
SPEC.:	DIM.: 595*595mm	SERIAL No.:
MFR.:	SUR.:551*551mm	Shielding Angle:

REFLECTANCE										
Ceiling	0.8	0.8	0.8	0.7	0.7	0.7	0.5	0.5	0.5	0
Walls	0.7	0.5	0.3	0.7	0.5	0.3	0.7	0.5	0.3	0
Working plane	0.2	0.2	0.2	0.2	0.2	0.2	0.2	0.2	0.2	0
ROOM INDEX	UTILIZATION FACTORS(PERCENT) $k(RI) \times RCR = 5$									
k = 0.60	57	46	39	57	46	39	55	45	38	32
0.80	67	56	48	66	55	48	65	55	48	41
1.00	76	65	57	75	64	57	72	66	57	49
1.25	83	72	65	81	72	65	79	70	64	57
1.50	88	78	71	86	77	70	83	75	69	62
2.00	95	86	80	93	85	79	89	83	77	70
2.50	99	91	85	97	90	84	93	87	82	74
3.00	102	95	90	100	94	89	96	91	86	78
4.00	106	100	96	104	99	94	99	95	92	83
5.00	109	104	100	106	102	98	102	98	95	86
ROOM INDEX	UF(total)									Direct
According to DIN EN 13032-2 2004			Suspended				SHRNOM = 1.25			

C Range: 0 - 360DEG  
 C Interval: 5.0DEG  
 Test Speed: HIGH  
 Temperature:25.3DEG  
 Operators:He Xueping  
 Test Date:2017-06-15

$\gamma$  Range: 0 - 90DEG  
 $\gamma$  Interval: 0.5DEG  
 Test System:EVERFINE GO-2000A\_V1 SYSTEM V2.0.354  
 Humidity:65.0%  
 Test Distance:9.300m [K=1.0000]  
 Remarks:

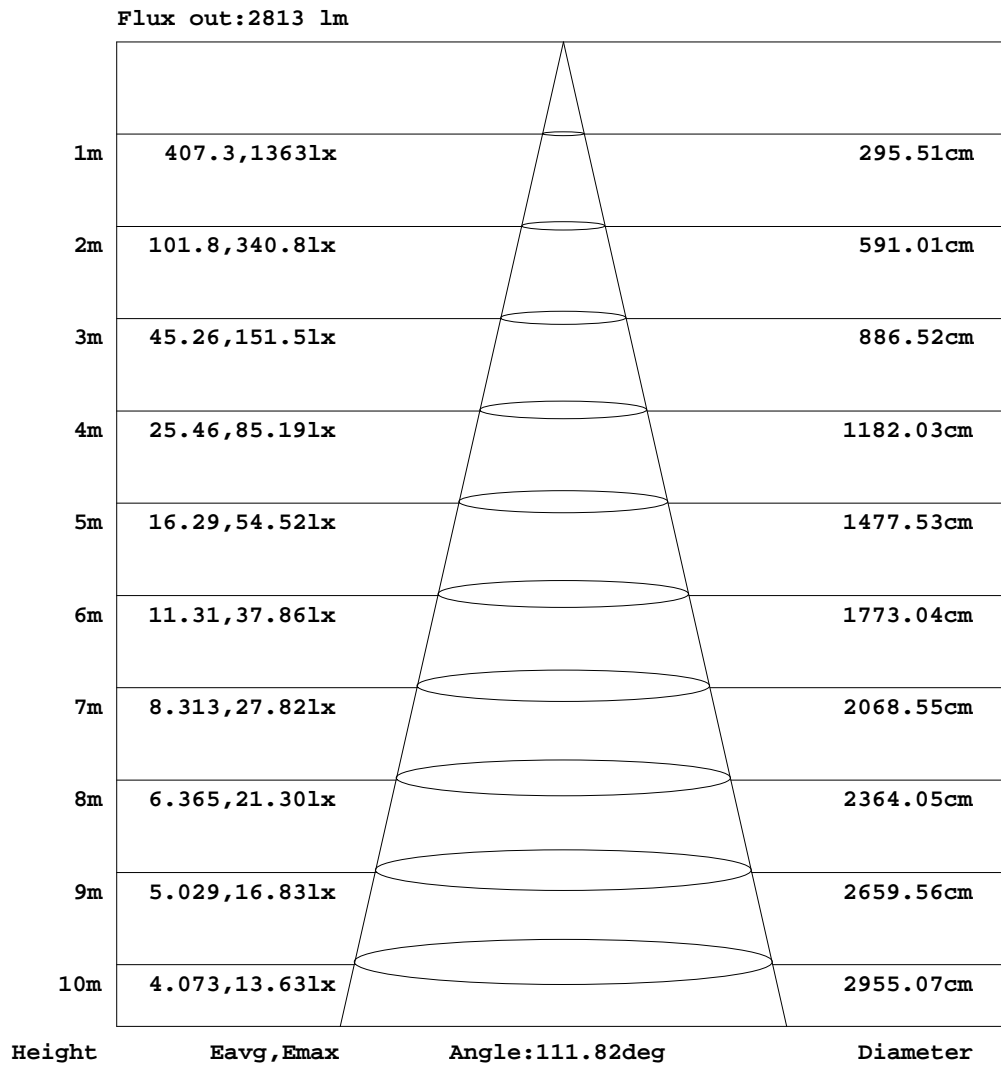
---



**AAI Figure**

Test:U:220.0V I:0.2053A P:43.66W PF:0.9668 Freq:49.99Hz Lamp Flux:3888.2x1 lm		
NAME: 595*595 Panel Light	TYPE:	WEIGHT:
SPEC.:	DIM.: 595*595mm	SERIAL No.:
MFR.:	SUR.:551*551mm	Shielding Angle:



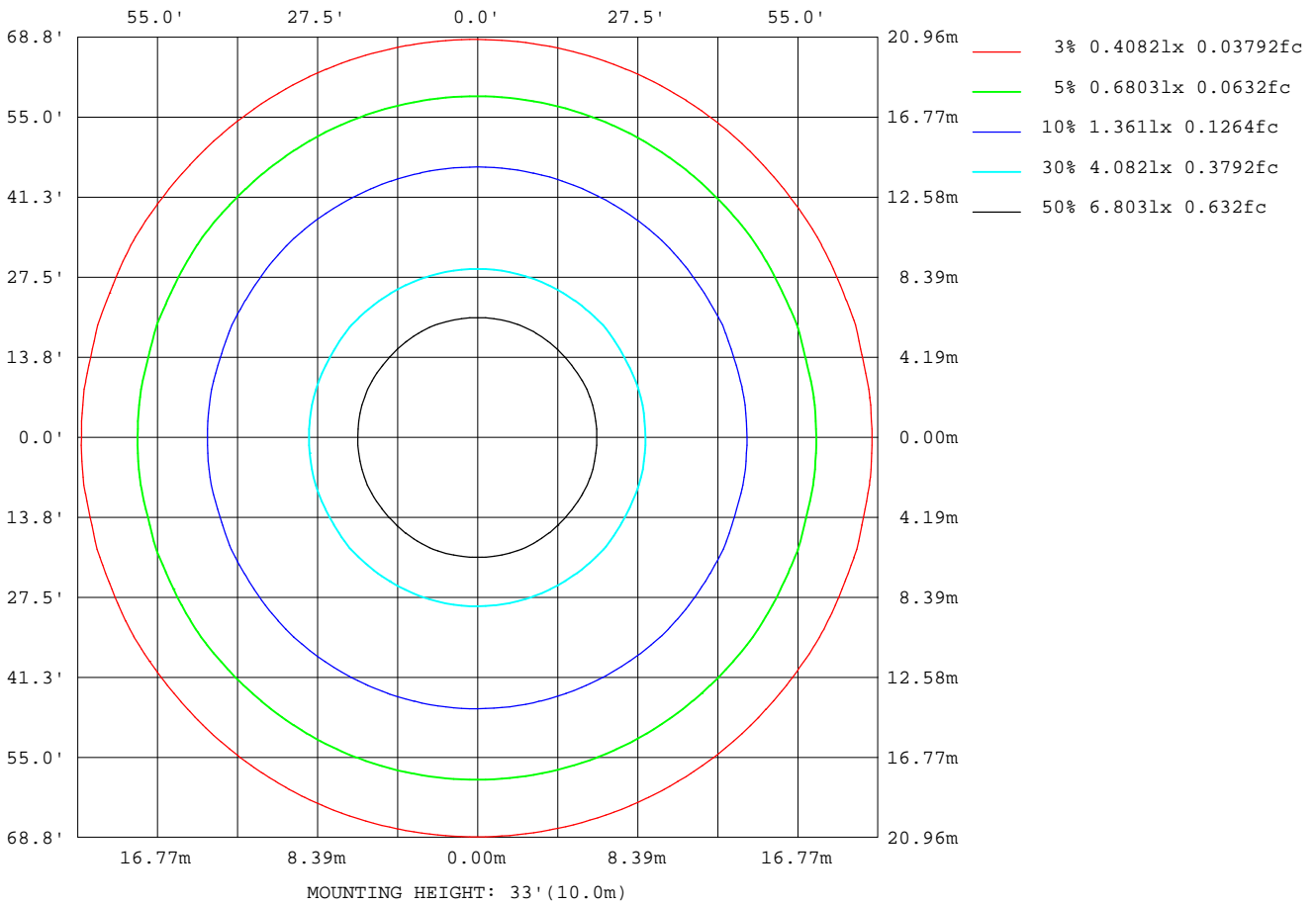
Note:The Curves indicate the illuminated area and the average illumination when the luminaire is at different distance.

C Range: 0 - 360DEG  
 C Interval: 5.0DEG  
 Test Speed: HIGH  
 Temperature:25.3DEG  
 Operators:He Xueping  
 Test Date:2017-06-15

γ Range: 0 - 90DEG  
 γ Interval: 0.5DEG  
 Test System:EVERFINE GO-2000A\_V1 SYSTEM V2.0.354  
 Humidity:65.0%  
 Test Distance:9.300m [K=1.0000]  
 Remarks:

**ISOLUX DIAGRAM**

Test:U:220.0V I:0.2053A P:43.66W PF:0.9668 Freq:49.99Hz Lamp Flux:3888.2x1 lm		
NAME: 595*595 Panel Light	TYPE:	WEIGHT:
SPEC.:	DIM.: 595*595mm	SERIAL No.:
MFR.:	SUR.:551*551mm	Shielding Angle:

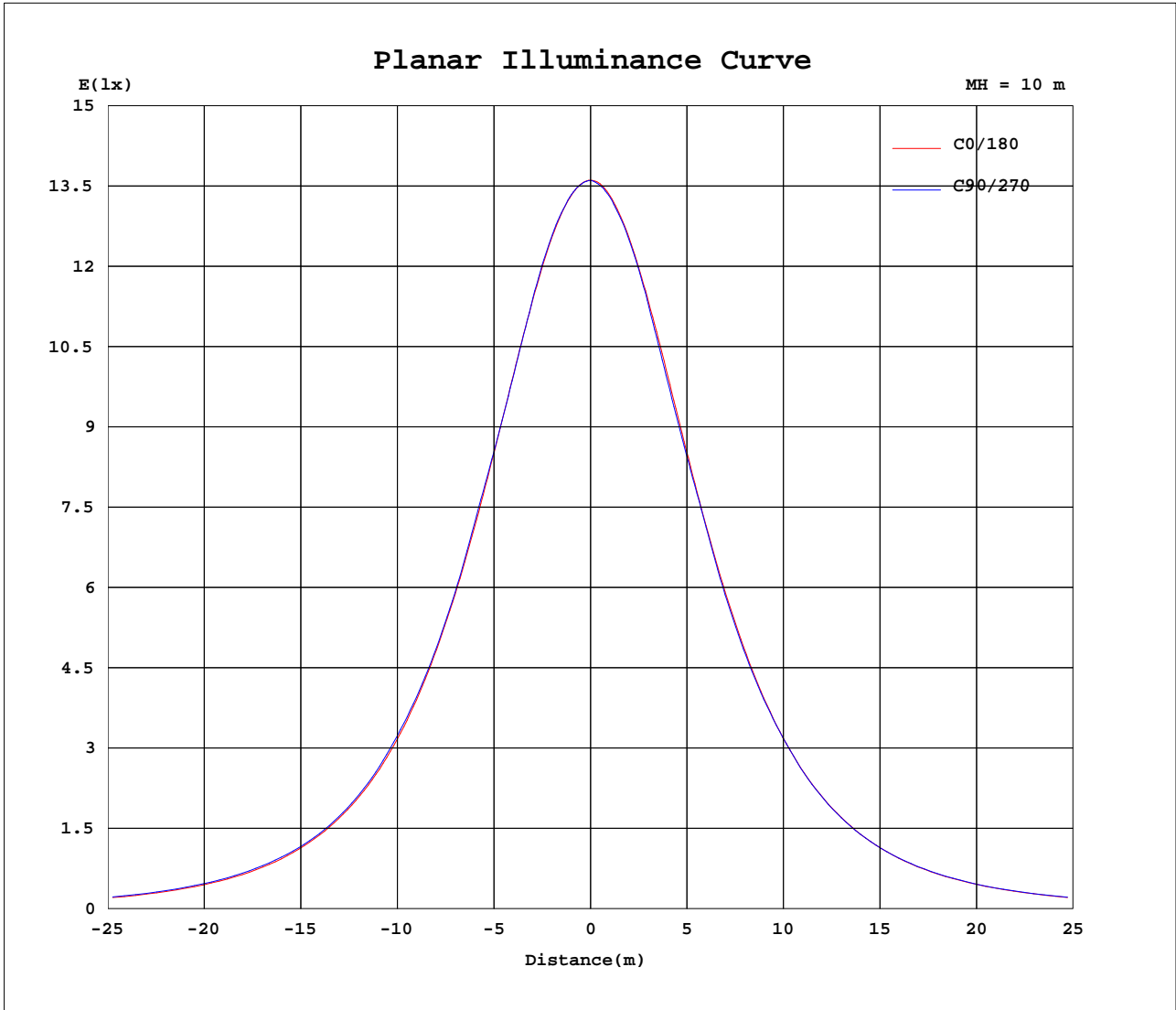


C Range: 0 - 360DEG  
 C Interval: 5.0DEG  
 Test Speed: HIGH  
 Temperature:25.3DEG  
 Operators:He Xueping  
 Test Date:2017-06-15

γ Range: 0 - 90DEG  
 γ Interval: 0.5DEG  
 Test System:EVERFINE GO-2000A\_V1 SYSTEM V2.0.354  
 Humidity:65.0%  
 Test Distance:9.300m [K=1.0000]  
 Remarks:



Planar Illuminance Curve



C Range: 0 - 360DEG  
 C Interval: 5.0DEG  
 Test Speed: HIGH  
 Temperature: 25.3DEG  
 Operators: He Xueping  
 Test Date: 2017-06-15

γ Range: 0 - 90DEG  
 γ Interval: 0.5DEG  
 Test System: EVERFINE GO-2000A\_V1 SYSTEM V2.0.354  
 Humidity: 65.0%  
 Test Distance: 9.300m [K=1.0000]  
 Remarks:

LUMINOUS DISTRIBUTION INTENSITY DATA

Test:U:220.0V I:0.2053A P:43.66W PF:0.9668 Freq:49.99Hz Lamp Flux:3888.2x1 lm		
NAME: 595*595 Panel Light	TYPE:	WEIGHT:
SPEC.:	DIM.: 595*595mm	SERIAL No.:
MFR.:	SUR.:551*551mm	Shielding Angle:

Table--1

UNIT: cd

C(DEG)\y (DEG)	0	5	10	15	20	25	30	35	40	45	50	55	60	65	70	75	80	85	90
0	1363	1363	1363	1363	1363	1363	1363	1363	1363	1363	1363	1363	1363	1363	1363	1363	1363	1363	1363
5	1356	1355	1355	1355	1355	1355	1355	1355	1355	1356	1356	1356	1356	1356	1356	1356	1356	1356	1356
10	1336	1336	1335	1335	1336	1336	1336	1337	1337	1337	1337	1338	1338	1339	1339	1339	1340	1340	1340
15	1305	1304	1304	1305	1305	1305	1306	1306	1308	1308	1307	1307	1308	1309	1309	1309	1309	1309	1309
20	1262	1261	1261	1262	1262	1263	1265	1264	1265	1265	1265	1263	1262	1261	1260	1260	1260	1260	1260
25	1208	1207	1208	1208	1209	1210	1210	1209	1208	1205	1205	1204	1205	1205	1206	1207	1208	1209	1209
30	1144	1143	1144	1145	1146	1146	1145	1141	1140	1139	1141	1143	1146	1149	1151	1154	1156	1157	1158
35	1071	1069	1070	1072	1072	1070	1066	1066	1067	1071	1075	1081	1079	1078	1077	1077	1077	1078	1078
40	988	987	988	988	987	984	983	986	992	996	993	992	992	993	994	995	996	997	998
45	898	897	899	898	894	893	897	905	901	900	900	902	905	908	911	913	914	915	916
50	801	800	801	798	796	800	805	802	802	804	808	812	813	813	813	814	814	815	815
55	698	696	697	693	695	701	697	698	702	706	706	706	706	708	709	710	711	712	713
60	588	588	587	585	592	588	591	595	595	595	596	598	600	603	605	607	608	609	610
65	476	477	473	478	476	479	482	482	483	486	489	491	493	494	495	496	497	497	498
70	363	363	362	363	366	367	368	371	374	376	377	379	380	381	383	383	384	385	386
75	253	251	254	255	256	258	261	262	264	265	267	268	269	270	271	272	273	273	274
80	149	146	144	149	154	155	157	158	158	159	161	162	163	164	165	166	167	167	167
85	52.7	36.9	45.4	54.9	59.8	61.8	62.6	66.3	69.4	72.2	74.5	76.6	78.3	79.9	81.2	82.3	83.0	83.4	83.7
90	0.00	0.00	0.00	0.00	0.00	0.00	0.00	0.00	0.00	0.00	0.00	0.00	0.00	0.00	0.00	0.00	0.00	0.00	0.00

C Range: 0 - 360DEG  
 C Interval: 5.0DEG  
 Test Speed: HIGH  
 Temperature:25.3DEG  
 Operators:He Xueping  
 Test Date:2017-06-15

y Range: 0 - 90DEG  
 y Interval: 0.5DEG  
 Test System:EVERFINE GO-2000A\_V1 SYSTEM V2.0.354  
 Humidity:65.0%  
 Test Distance:9.300m [K=1.0000]  
 Remarks:



LUMINOUS DISTRIBUTION INTENSITY DATA

Test:U:220.0V I:0.2053A P:43.66W PF:0.9668 Freq:49.99Hz Lamp Flux:3888.2x1 lm		
NAME: 595*595 Panel Light	TYPE:	WEIGHT:
SPEC.:	DIM.: 595*595mm	SERIAL No.:
MFR.:	SUR.:551*551mm	Shielding Angle:

Table--3

UNIT: cd

C( DEG) y (DEG)	190	195	200	205	210	215	220	225	230	235	240	245	250	255	260	265	270	275	280
0	1363	1363	1363	1363	1363	1363	1363	1363	1363	1363	1363	1363	1363	1363	1363	1363	1363	1363	1363
5	1357	1356	1356	1356	1356	1356	1356	1356	1356	1356	1355	1355	1355	1355	1355	1355	1355	1354	1354
10	1338	1338	1338	1338	1337	1338	1337	1337	1337	1337	1337	1337	1337	1337	1337	1337	1337	1337	1337
15	1308	1308	1308	1308	1307	1308	1309	1308	1307	1307	1307	1307	1307	1307	1306	1305	1305	1305	1305
20	1267	1267	1266	1267	1267	1266	1266	1266	1265	1263	1260	1259	1258	1257	1256	1255	1255	1255	1255
25	1215	1214	1214	1214	1214	1213	1211	1207	1205	1204	1203	1203	1203	1203	1203	1203	1203	1202	1202
30	1151	1151	1151	1152	1150	1145	1143	1141	1141	1142	1144	1145	1147	1149	1150	1150	1151	1150	1148
35	1078	1079	1079	1076	1071	1069	1070	1072	1075	1079	1077	1074	1073	1071	1071	1070	1070	1069	1069
40	996	996	996	989	988	989	994	996	993	991	990	989	989	989	989	989	989	988	987
45	906	906	900	898	901	907	903	901	901	901	903	904	906	907	907	906	906	905	904
50	808	805	801	803	807	804	803	805	808	811	811	810	809	808	807	806	806	805	804
55	704	698	699	702	699	700	703	707	706	705	704	704	704	704	704	704	703	702	702
60	594	590	594	590	592	596	595	595	595	596	597	599	600	601	601	601	601	600	599
65	480	482	479	482	484	482	483	484	486	489	489	490	490	491	490	490	489	488	488
70	368	368	370	370	370	371	373	374	375	376	377	378	379	379	379	378	378	377	376
75	259	261	260	261	262	263	264	265	266	266	267	267	268	268	268	267	267	266	265
80	157	157	158	159	160	160	160	160	161	162	162	162	163	163	163	163	162	161	161
85	60.9	61.9	64.7	65.5	65.5	68.5	71.0	73.1	74.9	76.5	77.8	78.9	79.9	80.6	81.2	81.3	81.0	80.6	80.0
90	0.00	0.00	0.00	0.00	0.00	0.00	0.00	0.00	0.00	0.00	0.00	0.00	0.00	0.00	0.00	0.00	0.00	0.00	0.00

C Range: 0 - 360DEG  
 C Interval: 5.0DEG  
 Test Speed: HIGH  
 Temperature:25.3DEG  
 Operators:He Xueping  
 Test Date:2017-06-15

y Range: 0 - 90DEG  
 y Interval: 0.5DEG  
 Test System:EVERFINE GO-2000A\_V1 SYSTEM V2.0.354  
 Humidity:65.0%  
 Test Distance:9.300m [K=1.0000]  
 Remarks:

