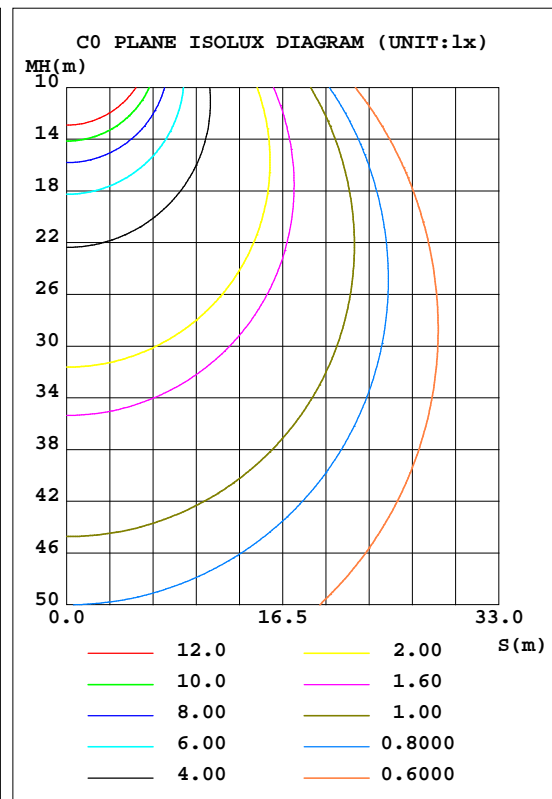
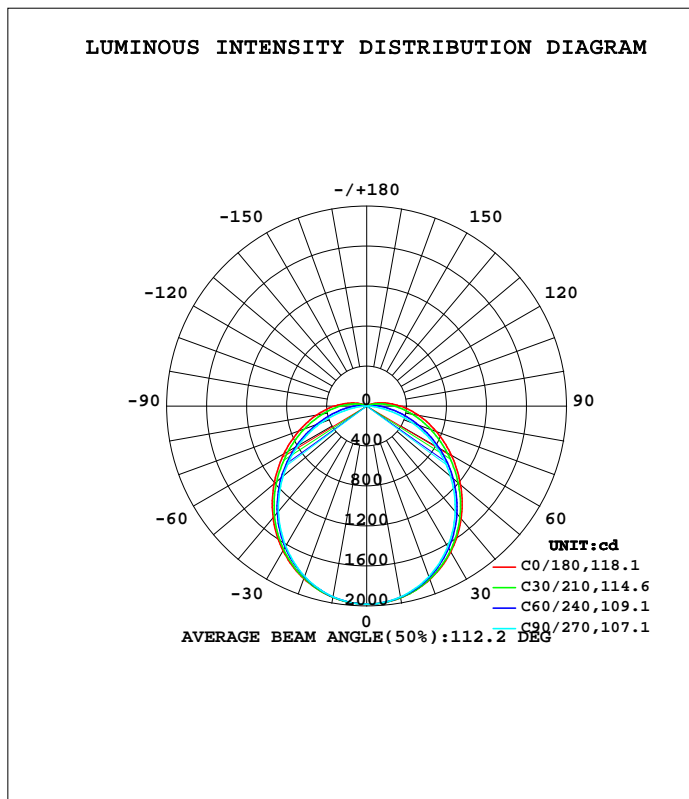


LUMINAIRE PHOTOMETRIC TEST REPORT

Test:U:220.0V I:0.3167A P:60.35W PF:0.8661 Lamp Flux:6154.3x1 lm		
NAME:	TYPE:	WEIGHT:
SPEC.:	DIM.:	SERIAL No.:BLD2018013P03
MFR.:	SUR.:0.066*1.72	Shielding Angle:

DATA OF LAMP		PHOTOMETRIC DATA Eff: 101.98 lm/W			
MODEL	1.8M 66W 6000K	I _{max} (cd)	1982	S/MH(C0/180)	1.26
NOMINAL POWER(W)		LOR(%)	100.0	S/MH(C90/270)	1.22
RATED VOLTAGE(V)		TOTAL FLUX(lm)	6154.3	η UP, DN(C0-180)	1.8,48.3
NOMINAL FLUX(lm)	6154.3	CIE CLASS	DIRECT	η UP, DN(C180-360)	1.8,48.1
LAMPS INSIDE	1	η up(%)	3.6	CIBSE SHR NOM	1.25
TEST VOLTAGE(V)		η down(%)	96.4	CIBSE SHR MAX	1.35



C Range: 0 - 360DEG
 C Interval: 15.0DEG
 Test Speed: HIGH
 Temperature:15DEG
 Operators:HUA
 Test Date:2018-01-13

γ Range: 0 - 180DEG
 γ Interval: 1.0DEG
 Test System:EVERFINE GO-2000B_V1 SYSTEM V2.0.350
 Humidity:33%
 Test Distance:12.218m [K=1.0000]
 Remarks:

ZONAL FLUX DIAGRAM

ZONAL FLUX DIAGRAM:

γ	C0	C45	C90	C135	C180	C225	C270	C315	γ	Φ zone	Φ total	%lum,lamp
10	1947	1946	1940	1942	1943	1940	1938	1943	0- 10	187.3	187.3	3.04,3.04
20	1846	1836	1816	1828	1838	1824	1813	1831	10- 20	534.6	721.8	11.7,11.7
30	1684	1659	1624	1650	1673	1644	1620	1654	20- 30	805.2	1527	24.8,24.8
40	1472	1430	1379	1419	1457	1411	1374	1424	30- 40	964.3	2491	40.5,40.5
50	1227	1165	1098	1151	1209	1143	1094	1159	40- 50	996.5	3488	56.7,56.7
60	977.7	883.8	795.6	867.7	957.8	859.9	791.7	878.7	50- 60	909.6	4398	71.5,71.5
70	739.8	619.0	480.8	603.1	719.7	595.4	477.5	615.0	60- 70	732.9	5130	83.4,83.4
80	523.8	387.9	178.7	375.2	505.5	368.5	175.9	386.0	70- 80	507.8	5638	91.6,91.6
90	338.9	206.8	2.439	200.1	324.3	194.3	1.623	207.2	80- 90	292.3	5931	96.4,96.4
100	189.5	82.53	2.875	81.77	179.9	77.05	2.209	80.45	90-100	143.8	6074	98.7,98.7
110	80.65	18.31	3.605	19.42	76.27	17.18	2.858	17.38	100-110	58.21	6133	99.6,99.6
120	19.40	4.742	4.345	4.814	17.31	3.903	3.562	3.766	110-120	16.72	6149	99.9,99.9
130	5.546	5.480	5.193	5.546	4.869	4.769	4.490	4.588	120-130	4.831	6154	100,100
140	0	0	0	0	0	0	0	0	130-140	0.2113	6154	100,100
150	0	0	0	0	0	0	0	0	140-150	0	6154	100,100
160	0	0	0	0	0	0	0	0	150-160	0	6154	100,100
170	0	0	0	0	0	0	0	0	160-170	0	6154	100,100
180	0	0	0	0	0	0	0	0	170-180	0	6154	100,100
DEG	LUMINOUS INTENSITY:cd									UNIT:lm		

Conical surface Flux(90deg): 2993.5 lm

%lum = 48.6%
%lamp = 48.6%

Conical surface Flux(120deg): 4397.5 lm

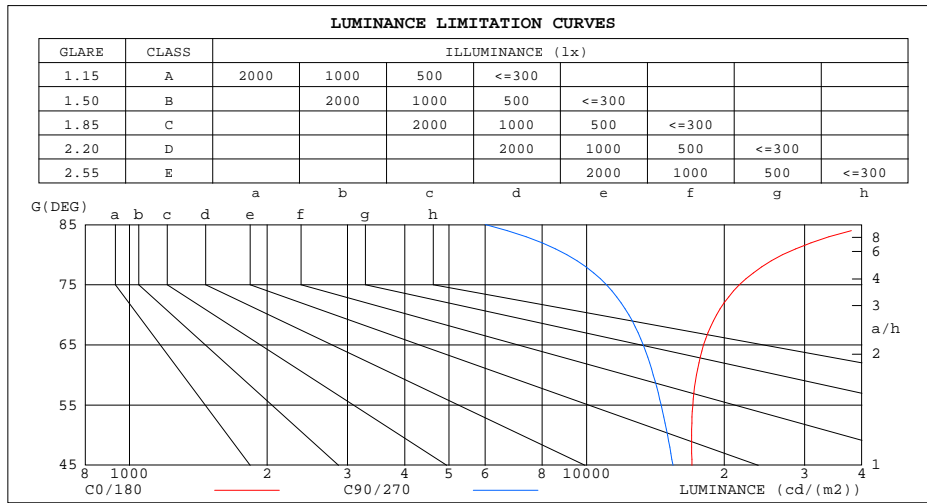
%lum = 71.5%
%lamp = 71.5%

C Range: 0 - 360DEG
C Interval: 15.0DEG
Test Speed: HIGH
Temperature:15DEG
Operators:HUA
Test Date:2018-01-13

γ Range: 0 - 180DEG
 γ Interval: 1.0DEG
Test System:EVERFINE GO-2000B_V1 SYSTEM V2.0.350
Humidity:33%
Test Distance:12.218m [K=1.0000]
Remarks:

LUMINANCE LIMITATION CURVES

Test:U:220.0V I:0.3167A P:60.35W PF:0.8661 Lamp Flux:6154.3x1 lm		
NAME:	TYPE:	WEIGHT:
SPEC.:	DIM.:	SERIAL No.:BLD2018013P03
MFR.:	SUR.:0.066*1.72	Shielding Angle:



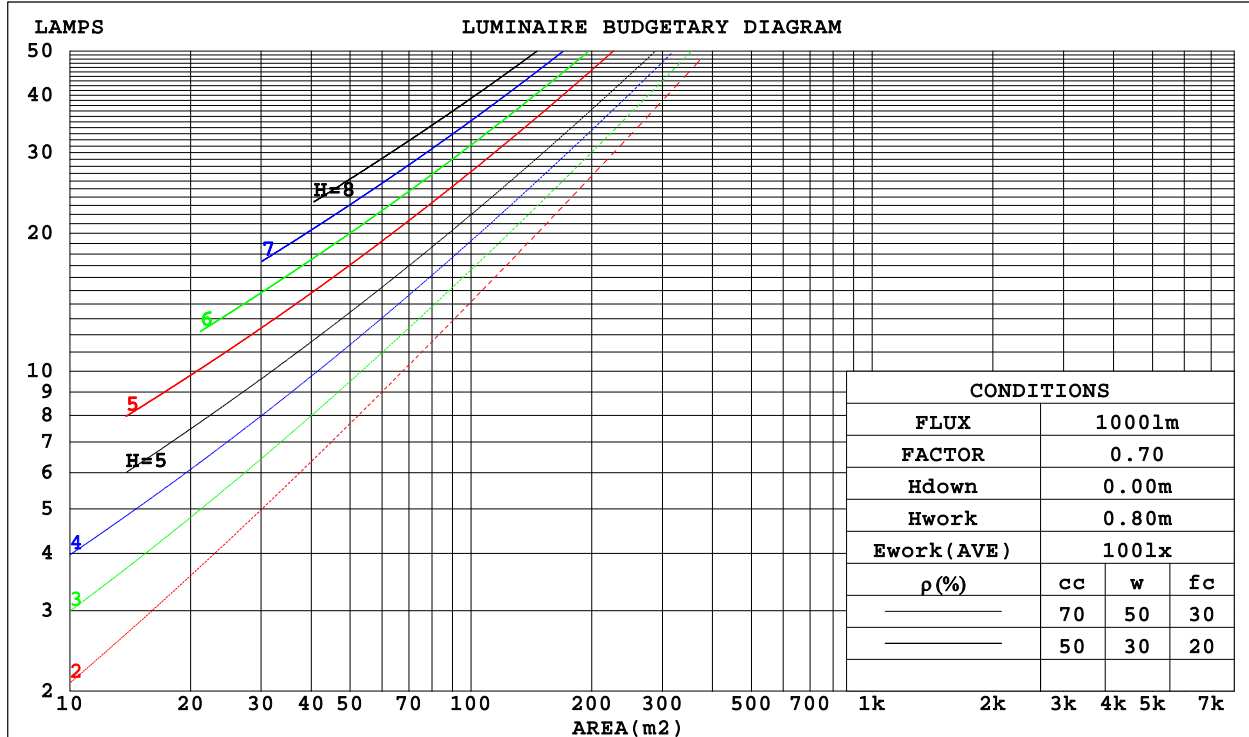
C Range: 0 - 360DEG
 C Interval: 15.0DEG
 Test Speed: HIGH
 Temperature:15DEG
 Operators:HUA
 Test Date:2018-01-13

γ Range: 0 - 180DEG
 γ Interval: 1.0DEG
 Test System:EVERFINE GO-2000B_V1 SYSTEM V2.0.350
 Humidity:33%
 Test Distance:12.218m [K=1.0000]
 Remarks:

CU AND LUMINAIRE BUDGETARY ESTIMATE DIAGRAM

Test:U:220.0V I:0.3167A P:60.35W PF:0.8661 Lamp Flux:6154.3x1 lm		
NAME:	TYPE:	WEIGHT:
SPEC.:	DIM.:	SERIAL No.:BLD2018013P03
MFR.:	SUR.:0.066*1.72	Shielding Angle:

ρ_{cc}	80%			70%			50%			30%			10%			0
ρ_w	50%	30%	10%	50%	30%	10%	50%	30%	10%	50%	30%	10%	50%	30%	10%	0
ρ_{fc}	20%			20%			20%			20%			20%			0
RCR	RCR:Room Cavity Ratio						Coefficients of Utilization(CU)									
0.0	1.18	1.18	1.18	1.15	1.15	1.15	1.09	1.09	1.09	1.04	1.04	1.04	.99	.99	.99	.96
1.0	1.01	.96	.92	.98	.94	.90	.93	.90	.87	.89	.86	.83	.85	.82	.80	.78
2.0	.88	.80	.74	.85	.79	.73	.81	.75	.71	.77	.73	.68	.74	.70	.66	.64
3.0	.77	.68	.61	.75	.67	.60	.71	.64	.59	.68	.62	.57	.65	.60	.56	.53
4.0	.68	.59	.52	.66	.58	.51	.63	.56	.50	.60	.54	.49	.58	.52	.48	.45
5.0	.60	.51	.44	.59	.50	.44	.56	.49	.43	.54	.47	.42	.52	.46	.41	.39
6.0	.54	.45	.39	.53	.45	.38	.51	.43	.38	.49	.42	.37	.47	.41	.36	.34
7.0	.49	.40	.34	.48	.40	.34	.46	.39	.33	.45	.38	.33	.43	.37	.32	.30
8.0	.45	.36	.30	.44	.36	.30	.42	.35	.30	.41	.34	.29	.39	.33	.29	.27
9.0	.41	.33	.27	.40	.33	.27	.39	.32	.27	.38	.31	.26	.36	.30	.26	.24
10.0	.38	.30	.25	.37	.30	.25	.36	.29	.24	.35	.28	.24	.34	.28	.24	.22



C Range: 0 - 360DEG
 C Interval: 15.0DEG
 Test Speed: HIGH
 Temperature:15DEG
 Operators:HUA
 Test Date:2018-01-13

γ Range: 0 - 180DEG
 γ Interval: 1.0DEG
 Test System:EVERFINE GO-2000B_V1 SYSTEM V2.0.350
 Humidity:33%
 Test Distance:12.218m [K=1.0000]
 Remarks:

WEC AND CCEC

Test:U:220.0V I:0.3167A P:60.35W PF:0.8661 Lamp Flux:6154.3x1 lm		
NAME:	TYPE:	WEIGHT:
SPEC.:	DIM.:	SERIAL No.:BLD2018013P03
MFR.:	SUR.:0.066*1.72	Shielding Angle:

pcc	80%			70%			50%			30%			10%			0
pw	50%	30%	10%	50%	30%	10%	50%	30%	10%	50%	30%	10%	50%	30%	10%	0
pfc	20%			20%			20%			20%			20%			0
RCR	RCR:Room Cavity Ratio						Wall Exitance Coefficients(WEC)									
0.0																
1.0	.346	.197	.062	.337	.192	.061	.322	.185	.059	.308	.177	.057	.294	.171	.055	
2.0	.311	.171	.052	.304	.167	.052	.290	.161	.050	.277	.156	.049	.266	.150	.047	
3.0	.282	.150	.045	.276	.148	.044	.263	.143	.043	.252	.138	.042	.241	.134	.041	
4.0	.257	.134	.039	.251	.132	.039	.240	.128	.038	.230	.124	.037	.221	.120	.037	
5.0	.236	.120	.035	.231	.118	.035	.221	.115	.034	.212	.112	.033	.203	.109	.033	
6.0	.218	.109	.031	.213	.108	.031	.204	.105	.030	.196	.102	.030	.188	.099	.029	
7.0	.202	.100	.028	.198	.098	.028	.190	.096	.028	.182	.093	.027	.175	.091	.027	
8.0	.188	.092	.026	.184	.091	.026	.177	.088	.025	.170	.086	.025	.164	.084	.025	
9.0	.176	.085	.024	.172	.084	.024	.166	.082	.023	.160	.080	.023	.154	.078	.023	
10.0	.165	.079	.022	.162	.078	.022	.156	.076	.022	.150	.075	.021	.145	.073	.021	

pcc	80%			70%			50%			30%			10%			0
pw	50%	30%	10%	50%	30%	10%	50%	30%	10%	50%	30%	10%	50%	30%	10%	0
pfc	20%			20%			20%			20%			20%			0
RCR	RCR:Room Cavity Ratio						Ceiling Cavity Exitance Coefficients(CCEC)									
0.0	.218	.218	.218	.186	.186	.186	.127	.127	.127	.073	.073	.073	.023	.023	.023	
1.0	.211	.184	.159	.180	.158	.137	.123	.108	.095	.071	.063	.055	.023	.020	.018	
2.0	.203	.160	.124	.174	.138	.107	.119	.095	.075	.069	.055	.044	.022	.018	.014	
3.0	.195	.143	.101	.167	.123	.087	.115	.085	.061	.066	.050	.036	.021	.016	.012	
4.0	.187	.130	.086	.161	.112	.074	.110	.078	.052	.064	.046	.031	.021	.015	.010	
5.0	.180	.119	.075	.154	.103	.065	.106	.072	.046	.062	.042	.027	.020	.014	.009	
6.0	.172	.111	.067	.148	.096	.058	.102	.067	.041	.059	.040	.025	.019	.013	.008	
7.0	.165	.104	.061	.142	.090	.054	.098	.063	.038	.057	.037	.023	.018	.012	.007	
8.0	.159	.098	.057	.136	.085	.050	.094	.060	.035	.055	.035	.021	.018	.012	.007	
9.0	.152	.093	.054	.131	.081	.047	.091	.057	.033	.053	.034	.020	.017	.011	.007	
10.0	.147	.089	.051	.126	.077	.045	.088	.055	.032	.051	.032	.019	.017	.011	.006	

C Range: 0 - 360DEG
 C Interval: 15.0DEG
 Test Speed: HIGH
 Temperature:15DEG
 Operators:HUA
 Test Date:2018-01-13

γ Range: 0 - 180DEG
 γ Interval: 1.0DEG
 Test System:EVERFINE GO-2000B_V1 SYSTEM V2.0.350
 Humidity:33%
 Test Distance:12.218m [K=1.0000]
 Remarks:

UGR(Unified Glare Rating) Table

Test:U:220.0V I:0.3167A P:60.35W PF:0.8661 Lamp Flux:6154.3x1 lm										
NAME:			TYPE:			WEIGHT:				
SPEC.:			DIM.:			SERIAL No.:BLD2018013P03				
MFR.:			SUR.:0.066*1.72			Shielding Angle:				
ceiling/cavity	0.7	0.7	0.5	0.5	0.3	0.7	0.7	0.5	0.5	0.3
walls	0.5	0.3	0.5	0.3	0.3	0.5	0.3	0.5	0.3	0.3
working plane	0.2	0.2	0.2	0.2	0.2	0.2	0.2	0.2	0.2	0.2
Room dimensions	Viewed crosswise					Viewed endwise				
x = 2H y = 2H	22.6	24.1	22.9	24.4	24.7	21.7	23.2	22.0	23.5	23.8
3H	24.7	26.1	25.0	26.4	26.7	23.1	24.5	23.5	24.8	25.2
4H	25.8	27.1	26.1	27.4	27.8	23.7	25.0	24.0	25.3	25.7
6H	26.9	28.2	27.3	28.5	28.9	24.0	25.3	24.4	25.6	26.0
8H	27.5	28.8	27.9	29.1	29.5	24.1	25.3	24.5	25.7	26.0
12H	28.2	29.4	28.6	29.8	30.2	24.1	25.3	24.5	25.7	26.1
4H 2H	23.2	24.5	23.5	24.8	25.2	22.5	23.8	22.8	24.1	24.5
3H	25.5	26.6	25.9	27.0	27.4	24.1	25.3	24.5	25.6	26.0
4H	26.7	27.8	27.2	28.2	28.6	24.8	25.9	25.2	26.3	26.7
6H	28.1	29.1	28.6	29.5	29.9	25.3	26.2	25.7	26.7	27.1
8H	28.8	29.7	29.3	30.2	30.6	25.4	26.3	25.9	26.8	27.2
12H	29.7	30.5	30.2	31.0	31.4	25.5	26.3	26.0	26.8	27.3
8H 4H	27.0	27.9	27.5	28.4	28.8	25.4	26.3	25.8	26.7	27.2
6H	28.7	29.4	29.2	29.9	30.4	26.1	26.9	26.6	27.3	27.9
8H	29.6	30.3	30.1	30.8	31.3	26.4	27.1	26.9	27.6	28.1
12H	30.7	31.3	31.2	31.8	32.3	26.6	27.2	27.1	27.7	28.2
12H 4H	27.1	27.9	27.5	28.3	28.8	25.5	26.4	26.0	26.8	27.3
6H	28.8	29.4	29.3	29.9	30.5	26.4	27.1	26.9	27.6	28.1
8H	29.8	30.4	30.3	30.9	31.4	26.8	27.4	27.3	27.9	28.5
Variations with the observer position at spacings:										
S = 1.0H	+ 0.1 / - 0.1					+ 0.1 / - 0.2				
1.5H	+ 0.2 / - 0.3					+ 0.2 / - 0.3				
2.0H	+ 0.2 / - 0.3					+ 0.1 / - 0.3				

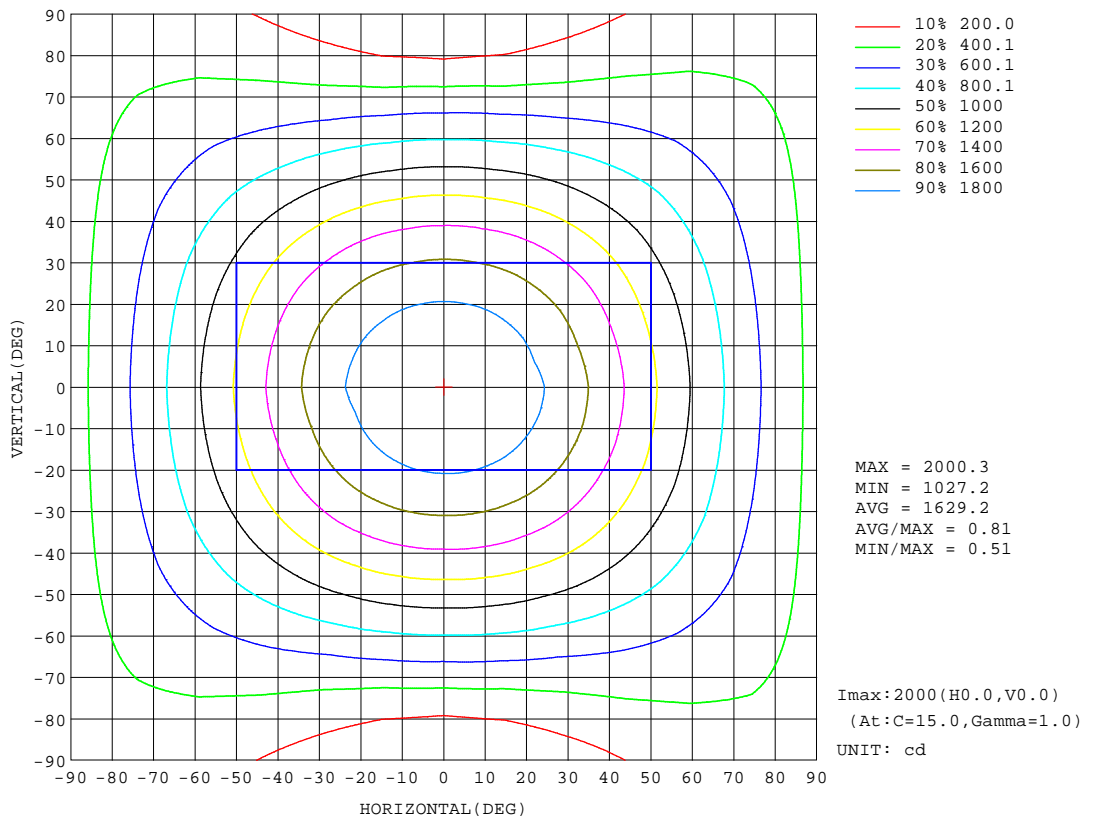
CIE Pub.117 Corrected 6154 lm Total Lamp Luminous Flux.(8log(F/F0) = 6.3)

C Range: 0 - 360DEG
 C Interval: 15.0DEG
 Test Speed: HIGH
 Temperature:15DEG
 Operators:HUA
 Test Date:2018-01-13

γ Range: 0 - 180DEG
 γ Interval: 1.0DEG
 Test System:EVERFINE GO-2000B_V1 SYSTEM V2.0.350
 Humidity:33%
 Test Distance:12.218m [K=1.0000]
 Remarks:

ISOCANDELA DIAGRAM

Test:U:220.0V I:0.3167A P:60.35W PF:0.8661 Lamp Flux:6154.3x1 lm		
NAME:	TYPE:	WEIGHT:
SPEC.:	DIM.:	SERIAL No.:BLD2018013P03
MFR.:	SUR.:0.066*1.72	Shielding Angle:



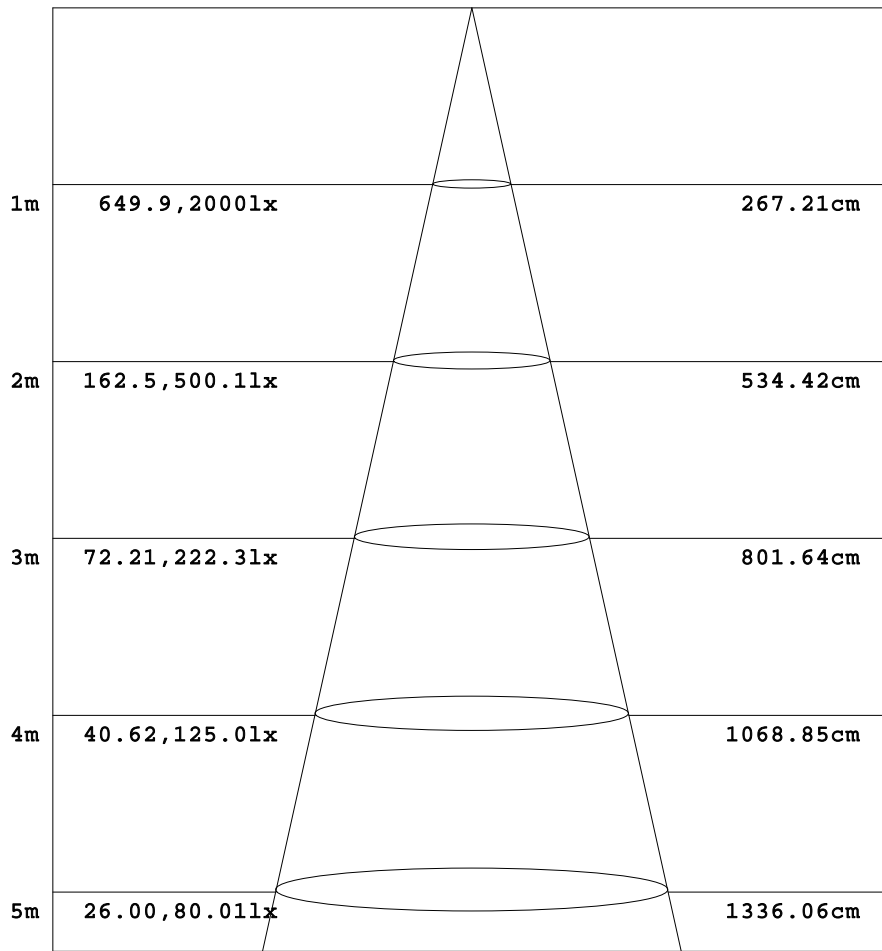
C Range: 0 - 360DEG
 C Interval: 15.0DEG
 Test Speed: HIGH
 Temperature:15DEG
 Operators:HUA
 Test Date:2018-01-13

γ Range: 0 - 180DEG
 γ Interval: 1.0DEG
 Test System:EVERFINE GO-2000B_V1 SYSTEM V2.0.350
 Humidity:33%
 Test Distance:12.218m [K=1.0000]
 Remarks:

AAI Figure

Test:U:220.0V I:0.3167A P:60.35W PF:0.8661 Lamp Flux:6154.3x1 lm		
NAME:	TYPE:	WEIGHT:
SPEC.:	DIM.:	SERIAL No.:BLD2018013P03
MFR.:	SUR.:0.066*1.72	Shielding Angle:

Flux out:3868 lm



Height Eavg, Emax Angle:106.37deg Diameter

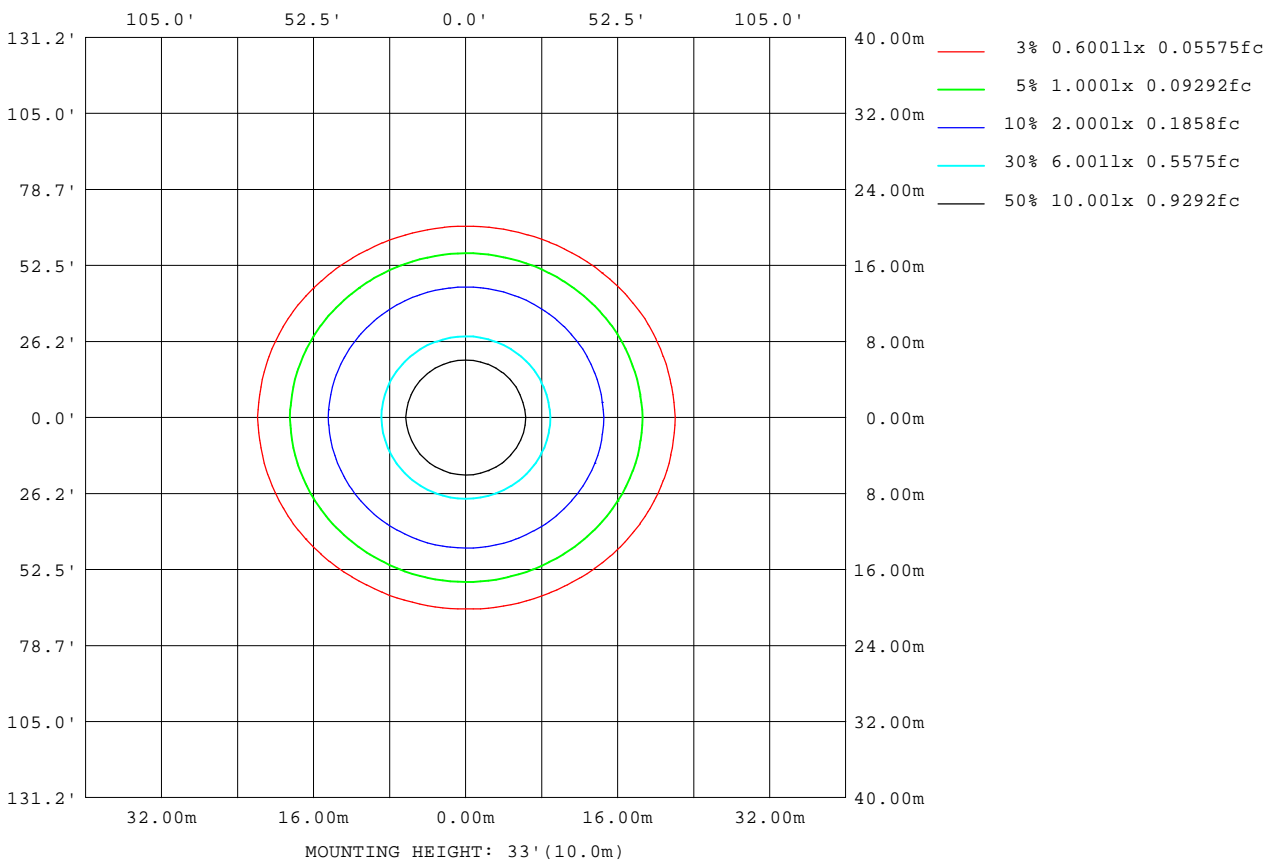
Note:The Curves indicate the illuminated area and the average illumination when the luminaire is at different distance.

C Range: 0 - 360DEG
 C Interval: 15.0DEG
 Test Speed: HIGH
 Temperature:15DEG
 Operators:HUA
 Test Date:2018-01-13

γ Range: 0 - 180DEG
 γ Interval: 1.0DEG
 Test System:EVERFINE GO-2000B_V1 SYSTEM V2.0.350
 Humidity:33%
 Test Distance:12.218m [K=1.0000]
 Remarks:

ISOLUX DIAGRAM

Test:U:220.0V I:0.3167A P:60.35W PF:0.8661 Lamp Flux:6154.3x1 lm		
NAME:	TYPE:	WEIGHT:
SPEC.:	DIM.:	SERIAL No.:BLD2018013P03
MFR.:	SUR.:0.066*1.72	Shielding Angle:



C Range: 0 - 360DEG
 C Interval: 15.0DEG
 Test Speed: HIGH
 Temperature:15DEG
 Operators:HUA
 Test Date:2018-01-13

γ Range: 0 - 180DEG
 γ Interval: 1.0DEG
 Test System:EVERFINE GO-2000B_V1 SYSTEM V2.0.350
 Humidity:33%
 Test Distance:12.218m [K=1.0000]
 Remarks:

LED Avg.L Report

Test:U:220.0V I:0.3167A P:60.35W PF:0.8661 Lamp Flux:6154.3x1 lm		
NAME:	TYPE:	WEIGHT:
SPEC.:	DIM.:	SERIAL No.:BLD2018013P03
MFR.:	SUR.:0.066*1.72	Shielding Angle:

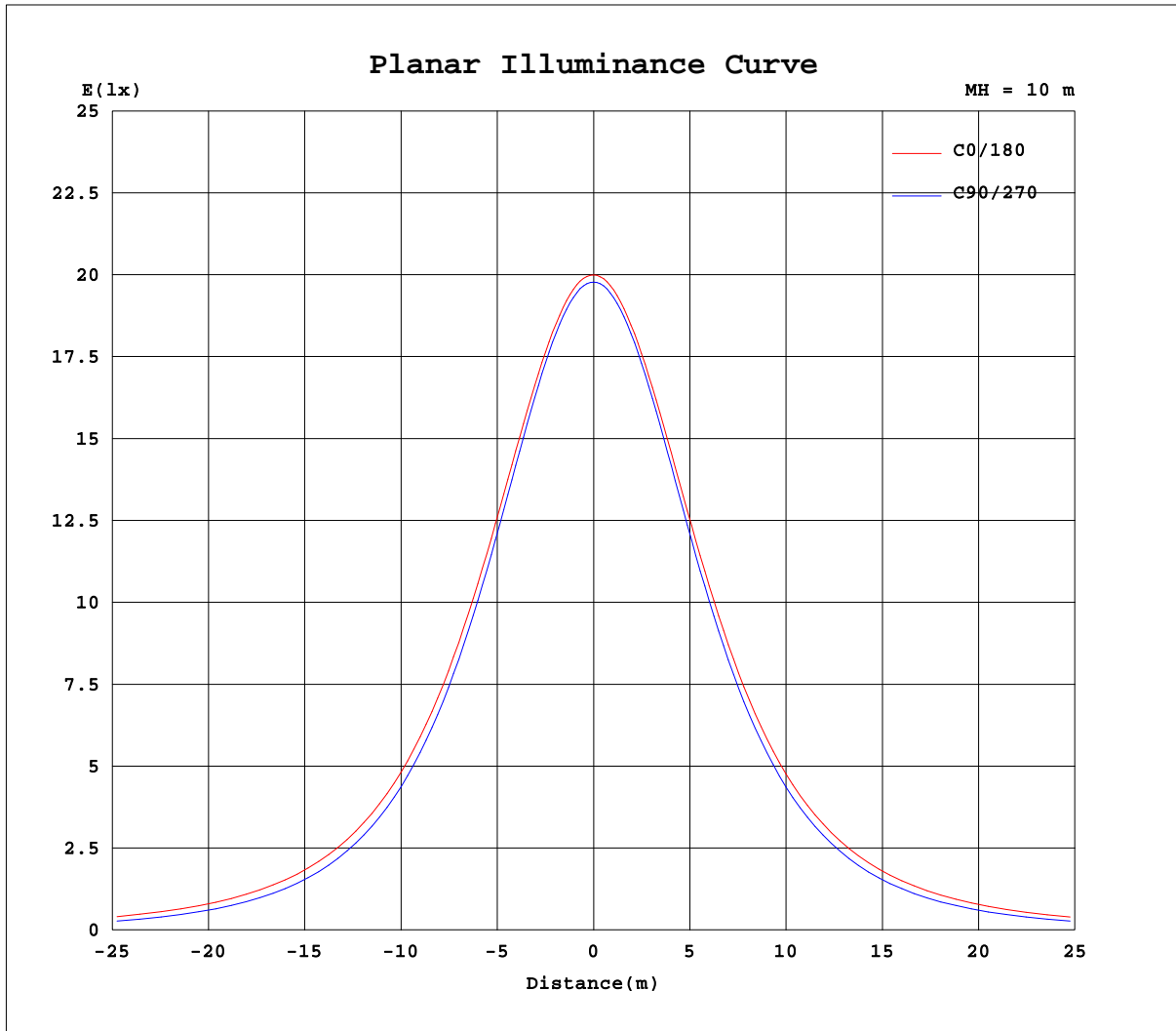
AvgL	cd/m2
L_0~180(65)av	17649
L_0~180(75)av	21066
L_0~180(85)av	42340
L_90~270(65)av	13285
L_90~270(75)av	11010
L_90~270(85)av	5888
L_45(65)av	15367
L_45(75)av	16611
L_45(85)av	28675

Standard: GB/T 29293-2012

C Range: 0 - 360DEG
 C Interval: 15.0DEG
 Test Speed: HIGH
 Temperature:15DEG
 Operators:HUA
 Test Date:2018-01-13

γ Range: 0 - 180DEG
 γ Interval: 1.0DEG
 Test System:EVERFINE GO-2000B_V1 SYSTEM V2.0.350
 Humidity:33%
 Test Distance:12.218m [K=1.0000]
 Remarks:

Planar Illuminance Curve



C Range: 0 - 360DEG
C Interval: 15.0DEG
Test Speed: HIGH
Temperature: 15DEG
Operators: HUA
Test Date: 2018-01-13

γ Range: 0 - 180DEG
 γ Interval: 1.0DEG
Test System: EVERFINE GO-2000B_V1 SYSTEM V2.0.350
Humidity: 33%
Test Distance: 12.218m [K=1.0000]
Remarks:

LUMINOUS DISTRIBUTION INTENSITY DATA

Test:U:220.0V I:0.3167A P:60.35W PF:0.8661 Lamp Flux:6154.3x1 lm		
NAME:	TYPE:	WEIGHT:
SPEC.:	DIM.:	SERIAL No.:BLD2018013P03
MFR.:	SUR.:0.066*1.72	Shielding Angle:

Table--1

UNIT: cd

C(DEG) γ (DEG)	0	15	30	45	60	75	90	105	120	135	150	165	180	195	210	225	240	255	270
0	1981	1981	1981	1981	1981	1981	1981	1981	1981	1981	1981	1981	1981	1981	1981	1981	1981	1981	1981
5	1974	1977	1973	1973	1972	1972	1971	1971	1971	1971	1971	1971	1972	1970	1971	1970	1970	1970	1970
10	1947	1951	1948	1946	1943	1941	1940	1940	1940	1942	1943	1943	1943	1942	1942	1940	1939	1937	1938
15	1905	1908	1905	1900	1894	1890	1888	1888	1890	1894	1897	1899	1898	1897	1896	1891	1888	1884	1885
20	1846	1849	1843	1836	1826	1820	1816	1818	1821	1828	1834	1838	1838	1836	1832	1824	1819	1813	1813
25	1772	1774	1765	1755	1741	1733	1728	1730	1736	1746	1755	1762	1763	1759	1754	1741	1733	1724	1724
30	1684	1685	1673	1659	1642	1631	1624	1627	1635	1650	1662	1672	1673	1668	1660	1644	1632	1620	1620
35	1583	1583	1568	1550	1528	1515	1506	1511	1521	1540	1555	1569	1570	1564	1553	1533	1517	1504	1503
40	1472	1470	1452	1430	1405	1388	1379	1384	1396	1419	1438	1454	1457	1449	1435	1411	1392	1376	1374
45	1352	1349	1327	1301	1271	1253	1242	1247	1262	1288	1312	1331	1336	1326	1309	1281	1258	1240	1237
50	1227	1222	1196	1165	1131	1110	1098	1105	1121	1151	1179	1203	1209	1198	1176	1143	1117	1096	1094
55	1101	1094	1062	1025	986	962	949	956	975	1010	1044	1074	1082	1068	1041	1002	970	948	945
60	978	969	931	884	838	810	796	803	826	868	912	948	958	942	909	860	822	795	792
65	857	846	804	748	690	655	639	649	678	732	785	825	837	819	782	724	673	640	635
70	740	728	682	619	547	500	481	493	535	603	663	707	720	702	660	595	531	486	477
75	628	615	567	498	416	351	325	344	405	483	550	596	609	591	546	476	400	337	322
80	524	510	460	388	299	216	179	211	290	375	445	492	505	487	441	368	285	204	176
85	427	412	363	290	200	111	59.5	109	194	281	350	397	410	393	347	275	189	102	57.0
90	339	325	277	207	122	43.4	2.44	43.7	119	200	266	311	324	307	263	194	115	39.2	1.62
95	259	246	202	139	65.2	11.9	2.49	12.4	65.0	134	194	235	247	231	191	129	61.2	9.84	1.91
100	190	177	134	82.5	28.5	3.30	2.87	3.33	29.8	81.8	133	169	180	166	130	77.1	27.0	2.44	2.21
105	130	119	85.3	44.1	9.54	3.37	3.22	3.35	10.7	43.9	83.5	114	123	111	80.9	40.7	8.87	2.45	2.52
110	80.7	70.1	46.9	18.3	4.00	3.72	3.61	3.71	4.04	19.4	46.4	69.2	76.3	66.9	44.3	17.2	3.08	2.78	2.86
115	43.9	35.8	21.5	6.21	4.10	4.08	4.04	4.10	4.17	6.84	21.1	36.4	41.1	34.4	19.6	5.37	3.39	3.16	3.18
120	19.4	15.7	7.52	4.74	4.46	4.45	4.35	4.51	4.56	4.81	7.52	14.9	17.3	13.5	6.42	3.90	3.78	3.55	3.56
125	6.83	5.73	5.15	5.09	4.87	4.87	4.77	4.94	4.98	5.21	5.20	5.56	5.53	4.72	4.47	4.31	4.23	4.00	3.99
130	5.55	5.61	5.50	5.48	5.30	5.25	5.19	5.35	5.50	5.55	5.62	5.66	4.87	4.89	4.89	4.77	4.69	4.48	4.49
135	0.00	0.00	0.00	0.00	0.00	0.00	0.00	0.00	0.00	0.00	0.00	0.00	0.00	0.00	0.00	0.00	0.00	0.00	0.00
140	0.00	0.00	0.00	0.00	0.00	0.00	0.00	0.00	0.00	0.00	0.00	0.00	0.00	0.00	0.00	0.00	0.00	0.00	0.00
145	0.00	0.00	0.00	0.00	0.00	0.00	0.00	0.00	0.00	0.00	0.00	0.00	0.00	0.00	0.00	0.00	0.00	0.00	0.00
150	0.00	0.00	0.00	0.00	0.00	0.00	0.00	0.00	0.00	0.00	0.00	0.00	0.00	0.00	0.00	0.00	0.00	0.00	0.00
155	0.00	0.00	0.00	0.00	0.00	0.00	0.00	0.00	0.00	0.00	0.00	0.00	0.00	0.00	0.00	0.00	0.00	0.00	0.00
160	0.00	0.00	0.00	0.00	0.00	0.00	0.00	0.00	0.00	0.00	0.00	0.00	0.00	0.00	0.00	0.00	0.00	0.00	0.00
165	0.00	0.00	0.00	0.00	0.00	0.00	0.00	0.00	0.00	0.00	0.00	0.00	0.00	0.00	0.00	0.00	0.00	0.00	0.00
170	0.00	0.00	0.00	0.00	0.00	0.00	0.00	0.00	0.00	0.00	0.00	0.00	0.00	0.00	0.00	0.00	0.00	0.00	0.00
175	0.00	0.00	0.00	0.00	0.00	0.00	0.00	0.00	0.00	0.00	0.00	0.00	0.00	0.00	0.00	0.00	0.00	0.00	0.00
180	0.00	0.00	0.00	0.00	0.00	0.00	0.00	0.00	0.00	0.00	0.00	0.00	0.00	0.00	0.00	0.00	0.00	0.00	0.00

C Range: 0 - 360DEG
 C Interval: 15.0DEG
 Test Speed: HIGH
 Temperature:15DEG
 Operators:HUA
 Test Date:2018-01-13

γ Range: 0 - 180DEG
 γ Interval: 1.0DEG
 Test System:EVERFINE GO-2000B_V1 SYSTEM V2.0.350
 Humidity:33%
 Test Distance:12.218m [K=1.0000]
 Remarks:

LUMINOUS DISTRIBUTION INTENSITY DATA

Test:U:220.0V I:0.3167A P:60.35W PF:0.8661 Lamp Flux:6154.3x1 lm		
NAME:	TYPE:	WEIGHT:
SPEC.:	DIM.:	SERIAL No.:BLD2018013P03
MFR.:	SUR.:0.066*1.72	Shielding Angle:

Table--2

UNIT: cd

C(DEG) γ (DEG)	285	300	315	330	345														
0	1981	1981	1981	1981	1981														
5	1970	1971	1972	1973	1975														
10	1938	1941	1943	1948	1949														
15	1886	1892	1896	1904	1905														
20	1815	1823	1831	1842	1845														
25	1727	1739	1750	1764	1770														
30	1624	1639	1654	1672	1681														
35	1508	1526	1545	1567	1579														
40	1381	1401	1424	1450	1466														
45	1245	1268	1295	1325	1345														
50	1102	1128	1159	1194	1218														
55	955	983	1019	1061	1090														
60	802	835	879	930	965														
65	648	688	744	803	842														
70	494	547	615	682	724														
75	346	415	495	567	612														
80	213	299	386	460	507														
85	110	201	289	364	410														
90	43.9	124	207	278	323														
95	11.8	67.4	139	203	244														
100	2.68	29.6	80.4	139	176														
105	2.47	9.27	43.6	87.0	118														
110	2.78	3.16	17.4	46.9	71.2														
115	3.21	3.31	5.56	20.6	37.0														
120	3.45	3.66	3.77	6.98	15.0														
125	3.89	4.08	4.16	4.36	4.96														
130	4.37	4.52	4.59	4.73	4.80														
135	0.00	0.00	0.00	0.00	0.00														
140	0.00	0.00	0.00	0.00	0.00														
145	0.00	0.00	0.00	0.00	0.00														
150	0.00	0.00	0.00	0.00	0.00														
155	0.00	0.00	0.00	0.00	0.00														
160	0.00	0.00	0.00	0.00	0.00														
165	0.00	0.00	0.00	0.00	0.00														
170	0.00	0.00	0.00	0.00	0.00														
175	0.00	0.00	0.00	0.00	0.00														
180	0.00	0.00	0.00	0.00	0.00														

C Range: 0 - 360DEG
 C Interval: 15.0DEG
 Test Speed: HIGH
 Temperature:15DEG
 Operators:HUA
 Test Date:2018-01-13

γ Range: 0 - 180DEG
 γ Interval: 1.0DEG
 Test System:EVERFINE GO-2000B_V1 SYSTEM V2.0.350
 Humidity:33%
 Test Distance:12.218m [K=1.0000]
 Remarks: