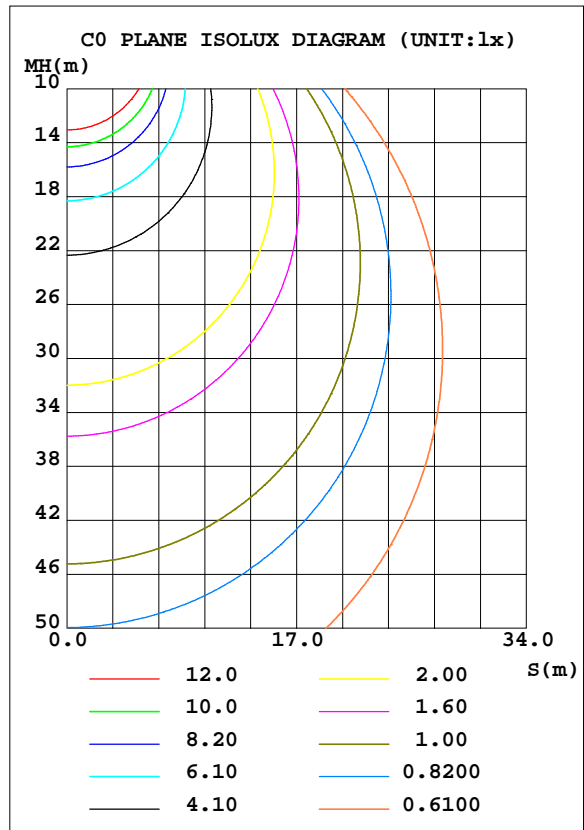
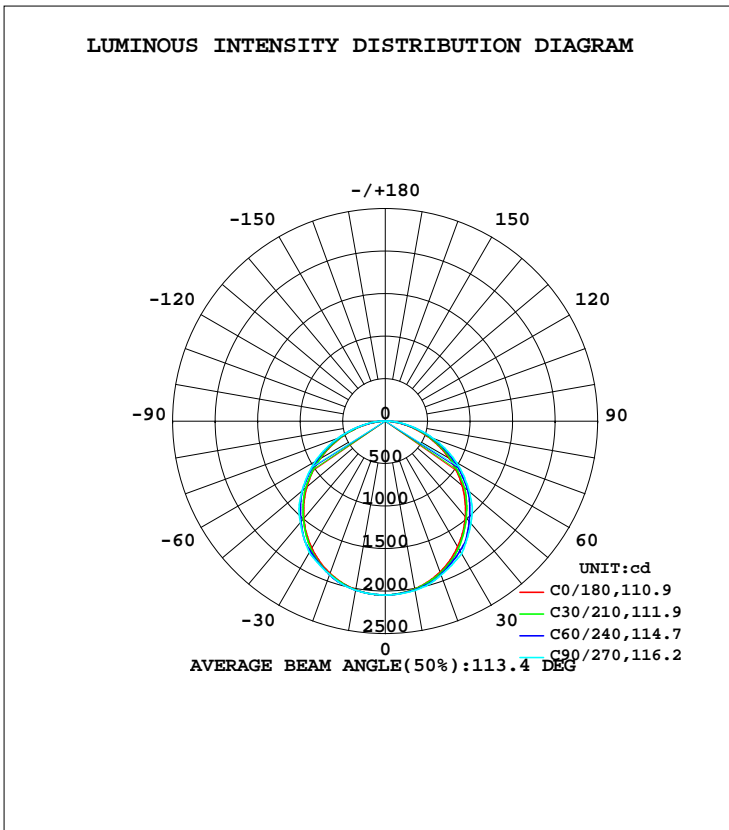


LUMINAIRE PHOTOMETRIC TEST REPORT

Test:U:219.8V I:0.2866A P:61.72W PF:0.9798 Freq:49.99Hz Lamp Flux:5921.9x1 lm		
NAME: 595*1195 Panel Light	TYPE:	WEIGHT:
SPEC.:	DIM.: 595*1195mm	SERIAL No.:
MFR.:	SUR.:545*1145mm	Shielding Angle:

DATA OF LAMP		PHOTOMETRIC DATA			
MODEL		I <sub>max</sub> (cd)	2046	S/MH(C0/180)	1.26
NOMINAL POWER(W)	65	LOR(%)	100.0	S/MH(C90/270)	1.29
RATED VOLTAGE(V)	220	TOTAL FLUX(lm)	5921.9	η UP, DN(C0-180)	0.0,50.2
NOMINAL FLUX(lm)	5921.9	CIE CLASS	DIRECT	η UP, DN(C180-360)	0.0,49.8
LAMPS INSIDE	1	η up(%)	0.0	CIBSE SHR NOM	1.25
TEST VOLTAGE(V)	220.1	η down(%)	100.0	CIBSE SHR MAX	1.35



C Range: 0 - 360DEG  
 C Interval: 5.0DEG  
 Test Speed: HIGH  
 Temperature:25.3DEG  
 Operators:He Xueping  
 Test Date:2017-06-15

γ Range: 0 - 90DEG  
 γ Interval: 0.5DEG  
 Test System:EVERFINE GO-2000A\_V1 SYSTEM V2.0.354  
 Humidity:65.0%  
 Test Distance:9.300m [K=1.0000]  
 Remarks:

ZONAL FLUX DIAGRAM

ZONAL FLUX DIAGRAM:

γ	C0	C45	C90	C135	C180	C225	C270	C315	γ	Φ zone	Φ total	%lum,lamp
10	2003	2010	2021	2016	2012	2016	2019	2008	0- 10	193.7	193.7	3.27,3.27
20	1888	1913	1926	1924	1905	1923	1920	1906	10- 20	556.7	750.3	12.7,12.7
30	1706	1736	1799	1748	1728	1747	1788	1722	20- 30	846.3	1597	27,27
40	1467	1524	1568	1535	1492	1534	1556	1505	30- 40	1026	2623	44.3,44.3
50	1182	1231	1291	1242	1205	1239	1279	1209	40- 50	1067	3690	62.3,62.3
60	864.0	909.4	967.7	918.1	883.6	914.5	956.8	885.5	50- 60	962.1	4652	78.6,78.6
70	530.7	572.1	606.0	576.3	545.4	573.1	597.3	549.0	60- 70	732.4	5384	90.9,90.9
80	216.3	243.4	258.1	244.7	224.3	243.6	252.2	223.4	70- 80	420.0	5804	98,98
90	0	0.0001	0	0.0001	0.0000	0.0001	0	0.0001	80- 90	117.8	5922	100,100
100									90-100			
110									100-110			
120									110-120			
130									120-130			
140									130-140			
150									140-150			
160									150-160			
170									160-170			
180									170-180			
DEG	LUMINOUS INTENSITY:cd									UNIT:lm		

Conical surface Flux(90deg): 3159.9 lm

%lum = 53.4%  
 %lamp = 53.4%

Conical surface Flux(120deg): 4651.8 lm

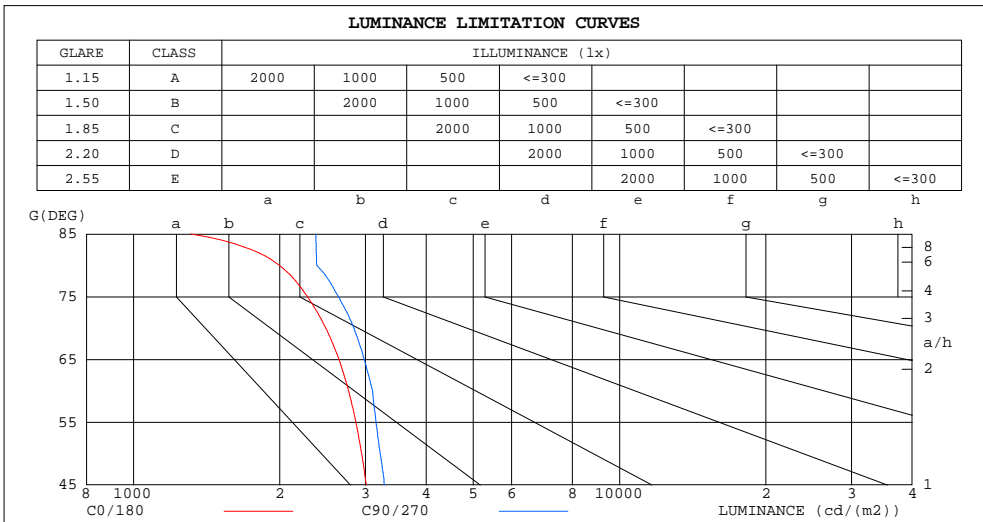
%lum = 78.6%  
 %lamp = 78.6%

C Range: 0 - 360DEG  
 C Interval: 5.0DEG  
 Test Speed: HIGH  
 Temperature:25.3DEG  
 Operators:He Xueping  
 Test Date:2017-06-15

γ Range: 0 - 90DEG  
 γ Interval: 0.5DEG  
 Test System:EVERFINE GO-2000A\_V1 SYSTEM V2.0.354  
 Humidity:65.0%  
 Test Distance:9.300m [K=1.0000]  
 Remarks:

LUMINANCE LIMITATION CURVES

Test:U:219.8V I:0.2866A P:61.72W PF:0.9798 Freq:49.99Hz Lamp Flux:5921.9x1 lm		
NAME: 595*1195 Panel Light	TYPE:	WEIGHT:
SPEC.:	DIM.: 595*1195mm	SERIAL No.:
MFR.:	SUR.:545*1145mm	Shielding Angle:



LUMINANCE cd/(m2)		
G(DEG)	C0/180	C90/270
85	1311	2373
80	1996	2382
75	2280	2641
70	2487	2840
65	2647	2984
60	2769	3102
55	2868	3155
50	2946	3218
45	3012	3281

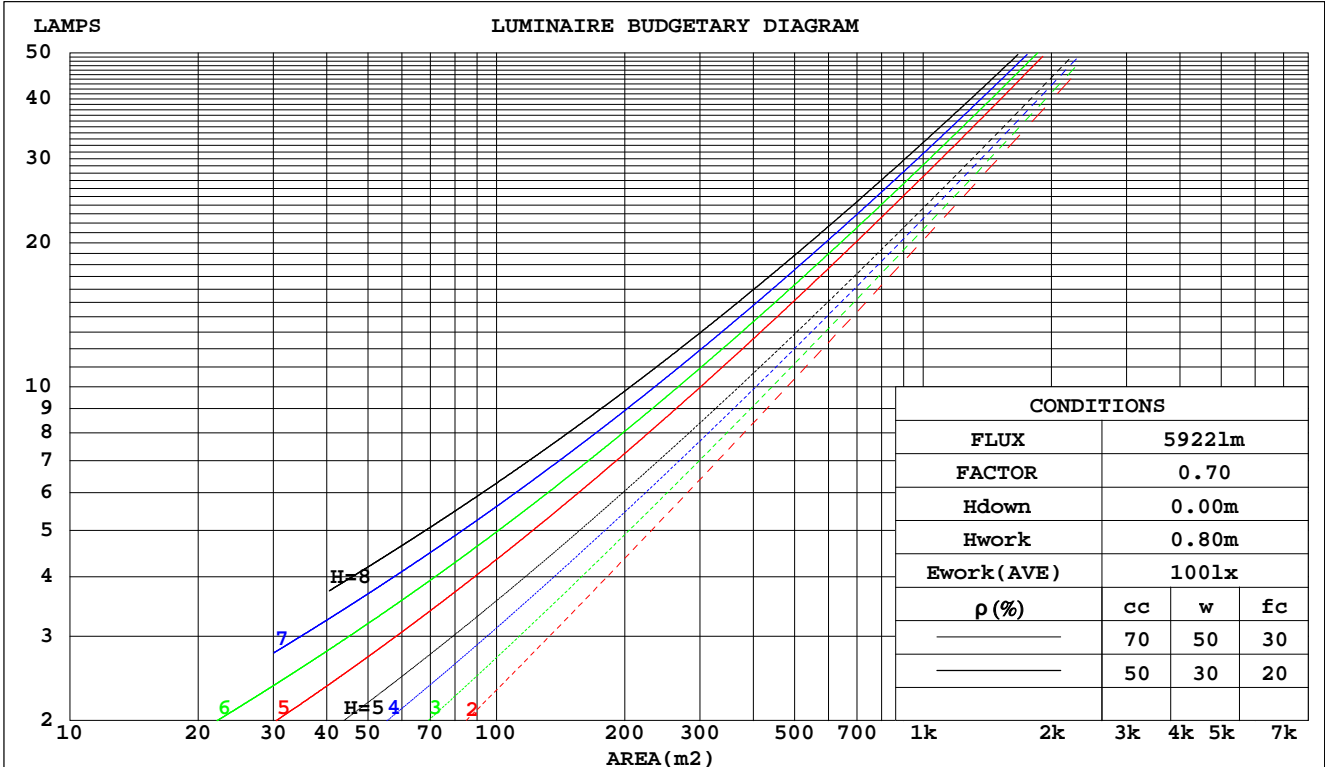
C Range: 0 - 360DEG  
 C Interval: 5.0DEG  
 Test Speed: HIGH  
 Temperature:25.3DEG  
 Operators:He Xueping  
 Test Date:2017-06-15

γ Range: 0 - 90DEG  
 γ Interval: 0.5DEG  
 Test System:EVERFINE GO-2000A\_V1 SYSTEM V2.0.354  
 Humidity:65.0%  
 Test Distance:9.300m [K=1.0000]  
 Remarks:

**CU AND LUMINAIRE BUDGETARY ESTIMATE DIAGRAM**

Test:U:219.8V I:0.2866A P:61.72W PF:0.9798 Freq:49.99Hz Lamp Flux:5921.9x1 lm		
NAME: 595*1195 Panel Light	TYPE:	WEIGHT:
SPEC.:	DIM.: 595*1195mm	SERIAL No.:
MFR.:	SUR.:545*1145mm	Shielding Angle:

$\rho_{cc}$	80%			70%			50%			30%			10%			0
$\rho_w$	50%	30%	10%	50%	30%	10%	50%	30%	10%	50%	30%	10%	50%	30%	10%	0
$\rho_{fc}$	20%			20%			20%			20%			20%			0
RCR	RCR:Room Cavity Ratio      Coefficients of Utilization(CU)															
0.0	1.19	1.19	1.19	1.16	1.16	1.16	1.11	1.11	1.11	1.06	1.06	1.06	1.02	1.02	1.02	1.00
1.0	1.04	.99	.96	1.01	.98	.94	.97	.94	.91	.93	.91	.88	.90	.88	.86	.83
2.0	.90	.83	.78	.88	.82	.77	.85	.79	.75	.82	.77	.73	.79	.75	.72	.69
3.0	.79	.71	.64	.78	.70	.64	.75	.68	.63	.72	.66	.62	.69	.65	.60	.58
4.0	.70	.61	.54	.69	.60	.54	.66	.59	.53	.64	.58	.53	.62	.56	.52	.50
5.0	.63	.53	.47	.61	.53	.47	.59	.52	.46	.57	.51	.45	.55	.50	.45	.43
6.0	.56	.47	.41	.55	.47	.41	.54	.46	.40	.52	.45	.40	.50	.44	.39	.37
7.0	.51	.42	.36	.50	.42	.36	.49	.41	.36	.47	.40	.35	.46	.40	.35	.33
8.0	.47	.38	.32	.46	.38	.32	.44	.37	.32	.43	.36	.32	.42	.36	.31	.29
9.0	.43	.34	.29	.42	.34	.29	.41	.34	.29	.40	.33	.28	.39	.33	.28	.26
10.0	.39	.31	.26	.39	.31	.26	.38	.31	.26	.37	.30	.26	.36	.30	.26	.24



C Range: 0 - 360DEG  
 C Interval: 5.0DEG  
 Test Speed: HIGH  
 Temperature:25.3DEG  
 Operators:He Xueping  
 Test Date:2017-06-15

$\gamma$  Range: 0 - 90DEG  
 $\gamma$  Interval: 0.5DEG  
 Test System:EVERFINE GO-2000A\_V1 SYSTEM V2.0.354  
 Humidity:65.0%  
 Test Distance:9.300m [K=1.0000]  
 Remarks:

WEC AND CCEC

Test:U:219.8V I:0.2866A P:61.72W PF:0.9798 Freq:49.99Hz Lamp Flux:5921.9x1 lm		
NAME: 595*1195 Panel Light	TYPE:	WEIGHT:
SPEC.:	DIM.: 595*1195mm	SERIAL No.:
MFR.:	SUR.:545*1145mm	Shielding Angle:

pcc	80%			70%			50%			30%			10%			0
pw	50%	30%	10%	50%	30%	10%	50%	30%	10%	50%	30%	10%	50%	30%	10%	0
pfc	20%			20%			20%			20%			20%			0
RCR	RCR:Room Cavity Ratio						Wall Exitance Coefficients(WEC)									
0.0																
1.0	.312	.177	.056	.305	.174	.055	.291	.167	.053	.279	.161	.052	.268	.155	.050	
2.0	.293	.161	.049	.287	.158	.049	.275	.153	.048	.264	.148	.046	.254	.144	.045	
3.0	.271	.144	.043	.266	.142	.043	.255	.138	.042	.246	.135	.041	.237	.131	.041	
4.0	.250	.130	.038	.245	.128	.038	.236	.125	.037	.227	.122	.037	.219	.119	.036	
5.0	.231	.118	.034	.227	.116	.034	.219	.114	.034	.211	.111	.033	.204	.109	.033	
6.0	.214	.107	.031	.210	.106	.031	.203	.104	.030	.196	.102	.030	.190	.100	.030	
7.0	.199	.099	.028	.196	.098	.028	.189	.096	.028	.183	.094	.027	.178	.092	.027	
8.0	.186	.091	.026	.183	.090	.025	.177	.089	.025	.172	.087	.025	.167	.086	.025	
9.0	.174	.084	.024	.172	.084	.023	.166	.082	.023	.162	.081	.023	.157	.080	.023	
10.0	.164	.079	.022	.162	.078	.022	.157	.077	.022	.152	.076	.022	.148	.075	.021	

pcc	80%			70%			50%			30%			10%			0
pw	50%	30%	10%	50%	30%	10%	50%	30%	10%	50%	30%	10%	50%	30%	10%	0
pfc	20%			20%			20%			20%			20%			0
RCR	RCR:Room Cavity Ratio						Ceiling Cavity Exitance Coefficients(CCEC)									
0.0	.190	.190	.190	.163	.163	.163	.111	.111	.111	.064	.064	.064	.020	.020	.020	
1.0	.180	.156	.134	.154	.134	.116	.106	.092	.080	.061	.053	.046	.019	.017	.015	
2.0	.172	.132	.098	.148	.114	.085	.101	.079	.059	.058	.046	.035	.019	.015	.011	
3.0	.165	.114	.074	.141	.099	.064	.097	.069	.045	.056	.040	.027	.018	.013	.009	
4.0	.157	.101	.058	.135	.087	.051	.093	.061	.036	.054	.036	.021	.017	.012	.007	
5.0	.150	.091	.047	.128	.078	.041	.089	.055	.029	.051	.032	.017	.017	.010	.006	
6.0	.142	.082	.039	.122	.071	.034	.084	.050	.024	.049	.029	.014	.016	.010	.005	
7.0	.136	.075	.033	.117	.065	.029	.081	.046	.020	.047	.027	.012	.015	.009	.004	
8.0	.129	.070	.029	.111	.060	.025	.077	.042	.018	.045	.025	.011	.014	.008	.003	
9.0	.123	.065	.025	.106	.056	.022	.073	.039	.016	.043	.023	.009	.014	.008	.003	
10.0	.117	.060	.022	.101	.052	.020	.070	.037	.014	.041	.022	.008	.013	.007	.003	

C Range: 0 - 360DEG  
 C Interval: 5.0DEG  
 Test Speed: HIGH  
 Temperature:25.3DEG  
 Operators:He Xueping  
 Test Date:2017-06-15

γ Range: 0 - 90DEG  
 γ Interval: 0.5DEG  
 Test System:EVERFINE GO-2000A\_V1 SYSTEM V2.0.354  
 Humidity:65.0%  
 Test Distance:9.300m [K=1.0000]  
 Remarks:

UGR(Unified Glare Rating) Table

Test:U:219.8V I:0.2866A P:61.72W PF:0.9798 Freq:49.99Hz Lamp Flux:5921.9x1 lm										
NAME: 595*1195 Panel Light					TYPE:			WEIGHT:		
SPEC.:					DIM.: 595*1195mm			SERIAL No.:		
MFR.:					SUR.:545*1145mm			Shielding Angle:		
ceiling/cavity	0.7	0.7	0.5	0.5	0.3	0.7	0.7	0.5	0.5	0.3
walls	0.5	0.3	0.5	0.3	0.3	0.5	0.3	0.5	0.3	0.3
working plane	0.2	0.2	0.2	0.2	0.2	0.2	0.2	0.2	0.2	0.2
Room dimensions	Viewed crosswise					Viewed endwise				
x = 2H y = 2H	10.3	11.8	10.6	12.0	12.2	10.8	12.3	11.1	12.5	12.7
3H	11.8	13.2	12.1	13.4	13.6	12.4	13.8	12.7	14.0	14.2
4H	12.3	13.7	12.6	13.9	14.2	13.0	14.3	13.3	14.6	14.8
6H	12.7	13.9	13.0	14.2	14.5	13.4	14.7	13.8	15.0	15.3
8H	12.8	14.0	13.1	14.3	14.6	13.6	14.8	13.9	15.1	15.4
12H	12.8	14.0	13.1	14.3	14.6	13.7	14.9	14.1	15.2	15.5
4H 2H	11.0	12.3	11.3	12.6	12.8	11.3	12.7	11.7	12.9	13.2
3H	12.6	13.8	13.0	14.1	14.4	13.1	14.3	13.5	14.6	14.9
4H	13.3	14.4	13.7	14.7	15.0	13.9	14.9	14.2	15.3	15.6
6H	13.8	14.7	14.2	15.1	15.4	14.5	15.4	14.9	15.8	16.1
8H	13.9	14.8	14.3	15.2	15.5	14.7	15.6	15.1	15.9	16.3
12H	13.9	14.8	14.4	15.1	15.6	14.9	15.7	15.3	16.1	16.5
8H 4H	13.6	14.5	14.0	14.9	15.2	14.1	15.0	14.5	15.4	15.8
6H	14.2	15.0	14.7	15.4	15.8	14.8	15.6	15.3	16.0	16.4
8H	14.4	15.1	14.9	15.5	16.0	15.2	15.8	15.6	16.2	16.7
12H	14.6	15.1	15.0	15.6	16.1	15.4	16.0	15.9	16.5	16.9
12H 4H	13.6	14.4	14.1	14.8	15.2	14.1	14.9	14.5	15.3	15.7
6H	14.3	15.0	14.8	15.4	15.8	14.9	15.6	15.4	16.0	16.4
8H	14.6	15.1	15.0	15.6	16.1	15.3	15.8	15.7	16.3	16.7
Variations with the observer position at spacings:										
S = 1.0H	+ 0.2 / - 0.2					+ 0.2 / - 0.2				
1.5H	+ 0.2 / - 0.3					+ 0.2 / - 0.3				
2.0H	+ 0.2 / - 0.3					+ 0.2 / - 0.2				

CIE Pub.117, 5922 lm Total Lamp Luminous Flux Correct (8log(F/F0) = 6.2)

C Range: 0 - 360DEG  
 C Interval: 5.0DEG  
 Test Speed: HIGH  
 Temperature:25.3DEG  
 Operators:He Xueping  
 Test Date:2017-06-15

γ Range: 0 - 90DEG  
 γ Interval: 0.5DEG  
 Test System:EVERFINE GO-2000A\_V1 SYSTEM V2.0.354  
 Humidity:65.0%  
 Test Distance:9.300m [K=1.0000]  
 Remarks:

UTILIZATION FACTORS TABLE

Test:U:219.8V I:0.2866A P:61.72W PF:0.9798 Freq:49.99Hz Lamp Flux:5921.9x1 lm		
NAME: 595*1195 Panel Light	TYPE:	WEIGHT:
SPEC.:	DIM.: 595*1195mm	SERIAL No.:
MFR.:	SUR.:545*1145mm	Shielding Angle:

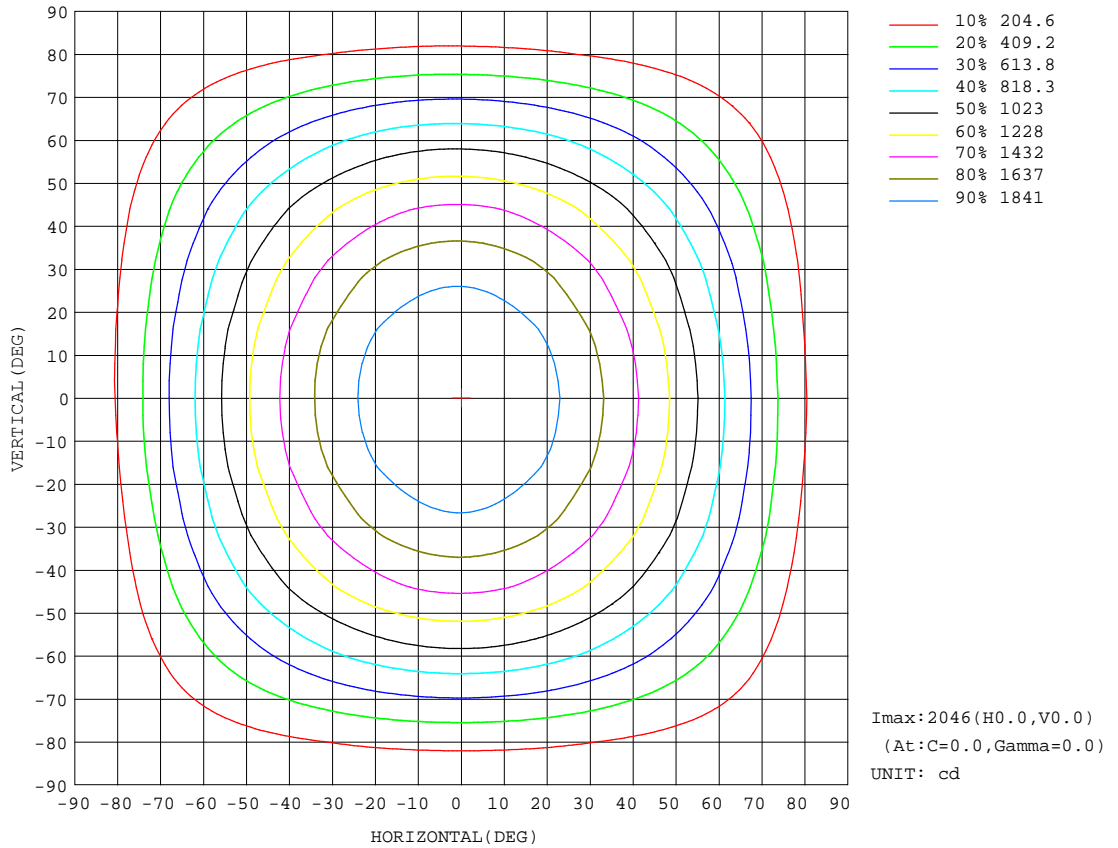
REFLECTANCE										
Ceiling	0.8	0.8	0.8	0.7	0.7	0.7	0.5	0.5	0.5	0
Walls	0.7	0.5	0.3	0.7	0.5	0.3	0.7	0.5	0.3	0
Working plane	0.2	0.2	0.2	0.2	0.2	0.2	0.2	0.2	0.2	0
ROOM INDEX	UTILIZATION FACTORS(PERCENT) $k(RI) \times RCR = 5$									
k = 0.60	57	46	39	57	45	39	55	45	38	32
0.80	67	56	48	66	55	48	65	54	48	41
1.00	76	65	57	75	64	57	72	65	56	49
1.25	83	72	65	81	72	65	79	70	64	57
1.50	88	78	71	86	77	70	83	75	69	62
2.00	95	86	80	93	85	79	89	83	77	70
2.50	99	91	85	97	90	84	93	87	82	74
3.00	102	95	90	100	94	89	96	91	86	78
4.00	106	100	96	104	99	94	100	95	92	83
5.00	109	104	100	106	102	98	102	98	95	86
ROOM INDEX	UF(total)									Direct
According to DIN EN 13032-2 2004			Suspended				SHRNOM = 1.25			

C Range: 0 - 360DEG  
 C Interval: 5.0DEG  
 Test Speed: HIGH  
 Temperature:25.3DEG  
 Operators:He Xueping  
 Test Date:2017-06-15

$\gamma$  Range: 0 - 90DEG  
 $\gamma$  Interval: 0.5DEG  
 Test System:EVERFINE GO-2000A\_V1 SYSTEM V2.0.354  
 Humidity:65.0%  
 Test Distance:9.300m [K=1.0000]  
 Remarks:

ISOCANDELA DIAGRAM

Test:U:219.8V I:0.2866A P:61.72W PF:0.9798 Freq:49.99Hz Lamp Flux:5921.9x1 lm		
NAME: 595*1195 Panel Light	TYPE:	WEIGHT:
SPEC.:	DIM.: 595*1195mm	SERIAL No.:
MFR.:	SUR.:545*1145mm	Shielding Angle:



C Range: 0 - 360DEG  
 C Interval: 5.0DEG  
 Test Speed: HIGH  
 Temperature:25.3DEG  
 Operators:He Xueping  
 Test Date:2017-06-15

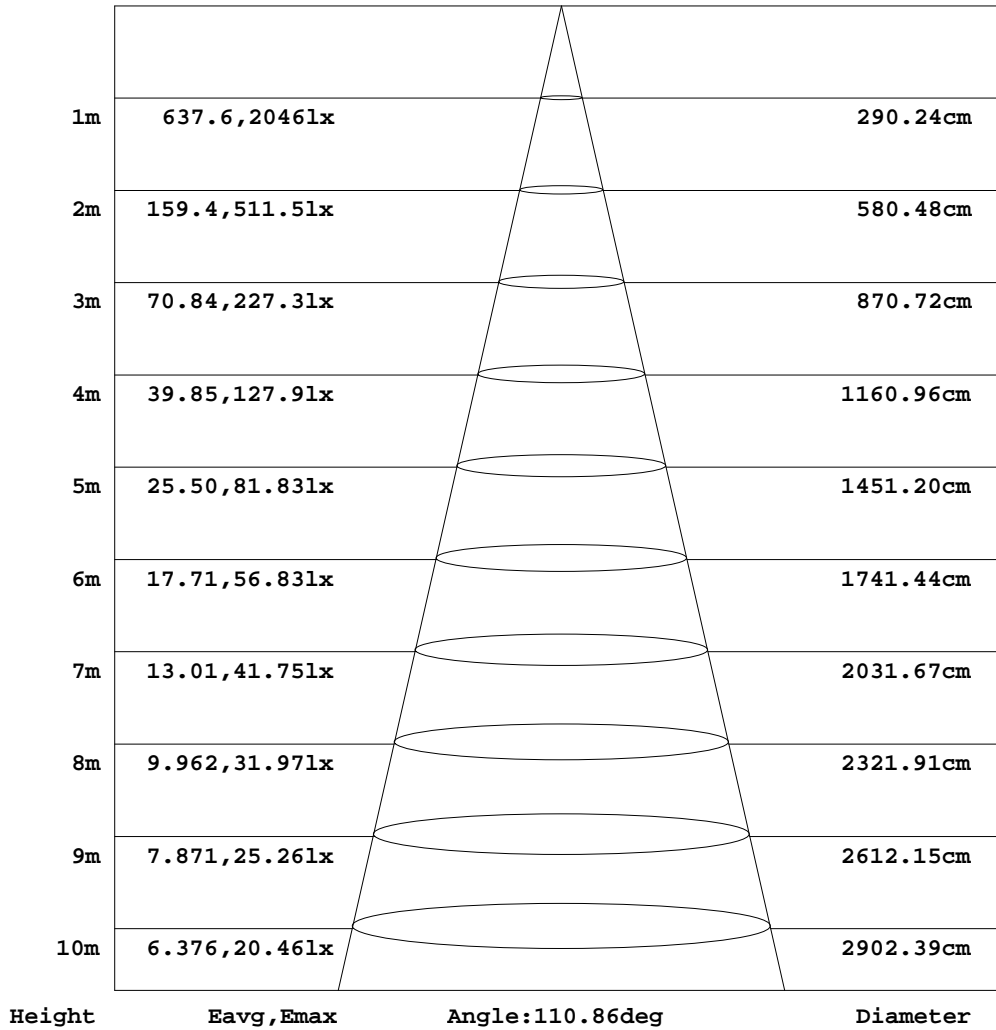
γ Range: 0 - 90DEG  
 γ Interval: 0.5DEG  
 Test System:EVERFINE GO-2000A\_V1 SYSTEM V2.0.354  
 Humidity:65.0%  
 Test Distance:9.300m [K=1.0000]  
 Remarks:



**AAI Figure**

Test:U:219.8V I:0.2866A P:61.72W PF:0.9798 Freq:49.99Hz Lamp Flux:5921.9x1 lm		
NAME: 595*1195 Panel Light	TYPE:	WEIGHT:
SPEC.:	DIM.: 595*1195mm	SERIAL No.:
MFR.:	SUR.:545*1145mm	Shielding Angle:

Flux out:4241 lm



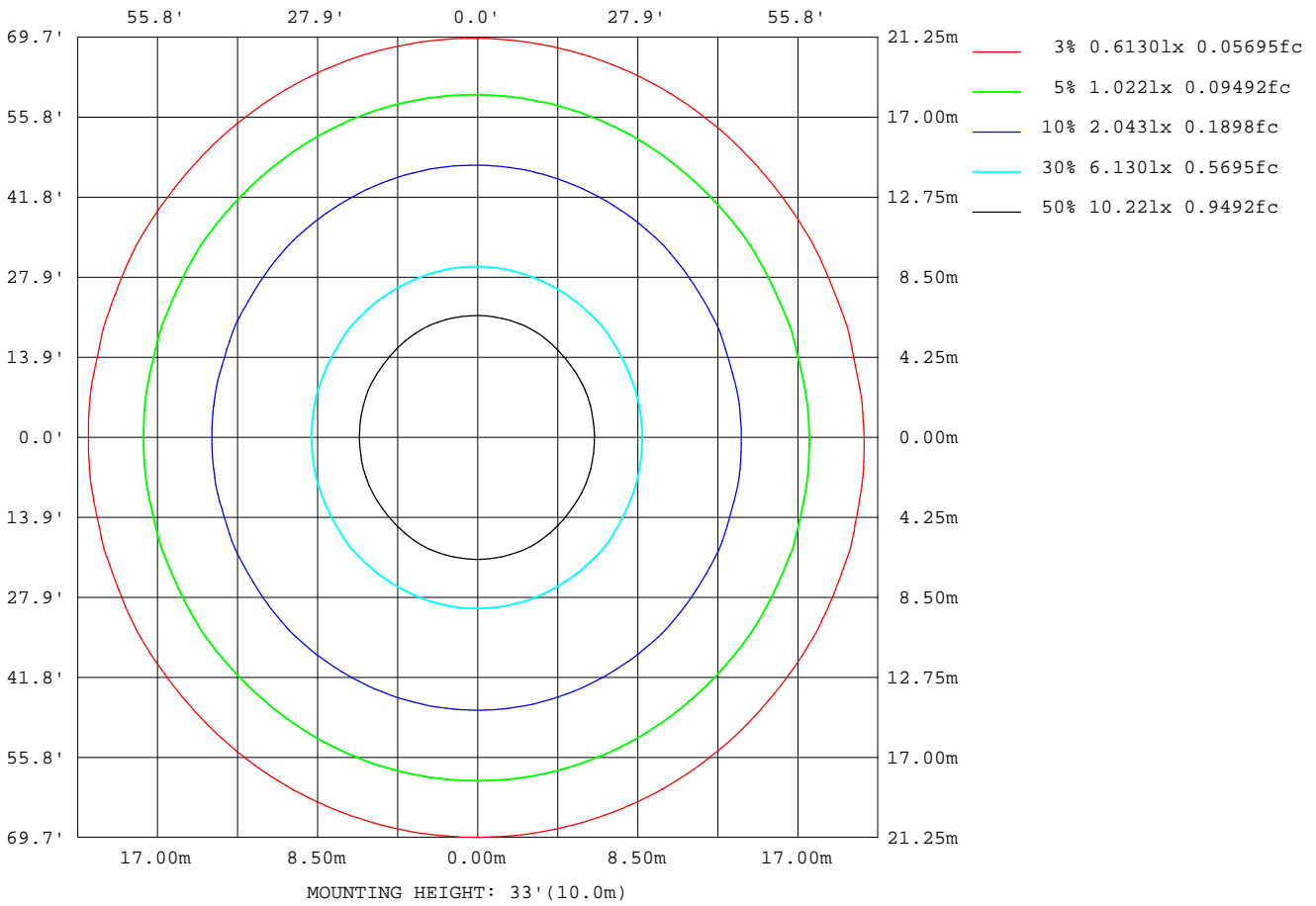
Note: The Curves indicate the illuminated area and the average illumination when the luminaire is at different distance.

C Range: 0 - 360DEG  
 C Interval: 5.0DEG  
 Test Speed: HIGH  
 Temperature: 25.3DEG  
 Operators: He Xueping  
 Test Date: 2017-06-15

γ Range: 0 - 90DEG  
 γ Interval: 0.5DEG  
 Test System: EVERFINE GO-2000A\_V1 SYSTEM V2.0.354  
 Humidity: 65.0%  
 Test Distance: 9.300m [K=1.0000]  
 Remarks:

**ISOLUX DIAGRAM**

Test:U:219.8V I:0.2866A P:61.72W PF:0.9798 Freq:49.99Hz Lamp Flux:5921.9x1 lm		
NAME: 595*1195 Panel Light	TYPE:	WEIGHT:
SPEC.:	DIM.: 595*1195mm	SERIAL No.:
MFR.:	SUR.:545*1145mm	Shielding Angle:



C Range: 0 - 360DEG  
 C Interval: 5.0DEG  
 Test Speed: HIGH  
 Temperature:25.3DEG  
 Operators:He Xueping  
 Test Date:2017-06-15

γ Range: 0 - 90DEG  
 γ Interval: 0.5DEG  
 Test System:EVERFINE GO-2000A\_V1 SYSTEM V2.0.354  
 Humidity:65.0%  
 Test Distance:9.300m [K=1.0000]  
 Remarks:

LED Avg.L Report

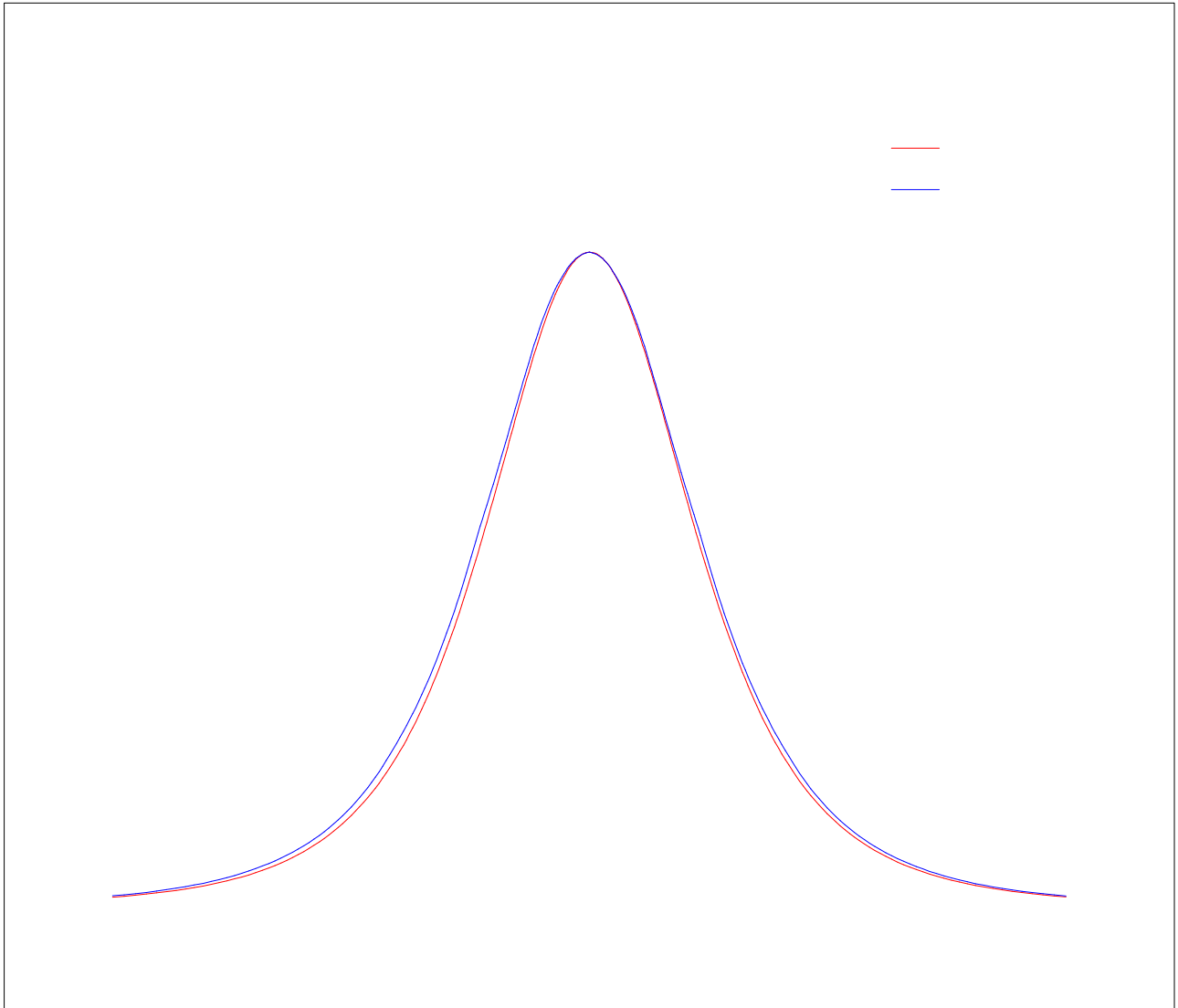
Test:U:219.8V I:0.2866A P:61.72W PF:0.9798 Freq:49.99Hz Lamp Flux:5921.9x1 lm		
NAME: 595*1195 Panel Light	TYPE:	WEIGHT:
SPEC.:	DIM.: 595*1195mm	SERIAL No.:
MFR.:	SUR.:545*1145mm	Shielding Angle:

AvgL	cd/m2
L_0~180(65)av	2679
L_0~180(75)av	2320
L_0~180(85)av	1307
L_90~270(65)av	2965
L_90~270(75)av	2618
L_90~270(85)av	2346
L_45(65)av	2793
L_45(75)av	2473
L_45(85)av	1992

Standard: GB/T 29293-2012

C Range: 0 - 360DEG  
 C Interval: 5.0DEG  
 Test Speed: HIGH  
 Temperature:25.3DEG  
 Operators:He Xueping  
 Test Date:2017-06-15

γ Range: 0 - 90DEG  
 γ Interval: 0.5DEG  
 Test System:EVERFINE GO-2000A\_V1 SYSTEM V2.0.354  
 Humidity:65.0%  
 Test Distance:9.300m [K=1.0000]  
 Remarks:



LUMINOUS DISTRIBUTION INTENSITY DATA

Test:U:219.8V I:0.2866A P:61.72W PF:0.9798 Freq:49.99Hz Lamp Flux:5921.9x1 lm		
NAME: 595*1195 Panel Light	TYPE:	WEIGHT:
SPEC.:	DIM.: 595*1195mm	SERIAL No.:
MFR.:	SUR.:545*1145mm	Shielding Angle:

Table--1

UNIT: cd

C(DEG) y (DEG)	0	5	10	15	20	25	30	35	40	45	50	55	60	65	70	75	80	85	90
0	2046	2046	2046	2046	2046	2046	2046	2046	2046	2046	2046	2046	2046	2046	2046	2046	2046	2046	2046
5	2034	2034	2033	2033	2033	2033	2034	2034	2034	2035	2036	2036	2037	2037	2037	2038	2038	2038	2039
10	2003	2003	2002	2003	2004	2005	2006	2007	2009	2010	2011	2013	2014	2016	2018	2019	2020	2021	2021
15	1955	1954	1954	1955	1957	1959	1961	1964	1968	1970	1972	1975	1978	1981	1983	1984	1985	1986	1987
20	1888	1887	1888	1890	1893	1896	1901	1904	1908	1913	1915	1917	1918	1919	1921	1923	1924	1925	1926
25	1805	1804	1805	1808	1813	1817	1822	1827	1829	1830	1833	1837	1842	1846	1851	1856	1859	1861	1863
30	1706	1705	1707	1711	1717	1722	1726	1726	1729	1736	1743	1752	1762	1771	1780	1788	1794	1797	1799
35	1593	1592	1594	1601	1605	1608	1609	1614	1623	1635	1649	1664	1668	1670	1674	1677	1680	1682	1684
40	1467	1466	1470	1475	1479	1478	1484	1495	1511	1524	1527	1531	1537	1544	1551	1558	1563	1566	1568
45	1329	1328	1334	1338	1337	1341	1354	1372	1374	1378	1386	1396	1407	1418	1428	1438	1442	1446	1448
50	1182	1181	1187	1188	1188	1200	1215	1215	1221	1231	1244	1259	1268	1273	1278	1283	1287	1289	1291
55	1026	1026	1032	1029	1037	1051	1050	1057	1069	1082	1087	1093	1100	1107	1114	1120	1125	1128	1129
60	864	866	868	869	883	881	887	899	904	909	917	925	934	943	950	957	963	966	968
65	698	701	700	711	710	716	723	726	732	740	750	759	765	771	776	780	784	786	787
70	531	534	536	539	545	548	552	559	567	572	578	583	589	593	598	601	604	605	606
75	368	368	369	369	374	381	389	396	400	404	408	412	415	418	420	423	425	426	427
80	216	203	201	209	219	228	235	239	241	243	247	249	252	254	255	257	257	258	258
85	71.3	61.3	71.2	80.8	87.5	93.2	96.5	103	108	112	115	118	121	123	125	127	128	129	129
90	0.00	0.00	0.00	0.00	0.00	0.00	0.00	0.00	0.00	0.00	0.00	0.00	0.00	0.00	0.00	0.00	0.00	0.00	0.00

C Range: 0 - 360DEG  
 C Interval: 5.0DEG  
 Test Speed: HIGH  
 Temperature:25.3DEG  
 Operators:He Xueping  
 Test Date:2017-06-15

Y Range: 0 - 90DEG  
 Y Interval: 0.5DEG  
 Test System:EVERFINE GO-2000A\_V1 SYSTEM V2.0.354  
 Humidity:65.0%  
 Test Distance:9.300m [K=1.0000]  
 Remarks:

## LUMINOUS DISTRIBUTION INTENSITY DATA

Test:U:219.8V I:0.2866A P:61.72W PF:0.9798 Freq:49.99Hz Lamp Flux:5921.9x1 lm		
NAME: 595*1195 Panel Light	TYPE:	WEIGHT:
SPEC.:	DIM.: 595*1195mm	SERIAL No.:
MFR.:	SUR.:545*1145mm	Shielding Angle:

Table--2

UNIT: cd

C(DEC)\ γ (DEC)	95	100	105	110	115	120	125	130	135	140	145	150	155	160	165	170	175	180	185
0	2046	2046	2046	2046	2046	2046	2046	2046	2046	2046	2046	2046	2046	2046	2046	2046	2046	2046	2046
5	2039	2039	2039	2039	2039	2039	2039	2039	2038	2038	2038	2037	2037	2037	2037	2038	2038	2039	2038
10	2021	2021	2021	2020	2019	2019	2018	2017	2016	2016	2015	2014	2014	2013	2012	2011	2012	2012	2012
15	1987	1987	1987	1987	1986	1984	1982	1980	1979	1977	1974	1972	1971	1970	1969	1967	1967	1968	1967
20	1927	1927	1926	1926	1925	1925	1925	1925	1924	1920	1917	1914	1911	1908	1907	1905	1904	1905	1905
25	1863	1862	1859	1856	1853	1849	1846	1844	1842	1842	1842	1838	1834	1831	1828	1826	1824	1825	1825
30	1799	1796	1791	1785	1778	1770	1762	1754	1748	1743	1742	1743	1741	1736	1732	1730	1728	1728	1729
35	1684	1683	1681	1679	1677	1675	1673	1659	1647	1636	1629	1626	1628	1626	1622	1619	1617	1617	1619
40	1568	1566	1562	1557	1551	1545	1540	1536	1535	1523	1509	1500	1497	1500	1497	1494	1493	1492	1493
45	1447	1446	1442	1434	1425	1415	1405	1396	1389	1385	1384	1368	1358	1356	1361	1357	1355	1354	1355
50	1291	1289	1287	1284	1280	1277	1268	1255	1242	1232	1226	1226	1214	1206	1209	1209	1207	1205	1207
55	1129	1127	1123	1118	1113	1107	1102	1097	1092	1080	1068	1061	1061	1051	1047	1053	1049	1047	1049
60	967	964	960	954	947	939	931	924	918	914	910	898	891	892	882	885	884	884	884
65	786	785	782	779	774	769	763	755	746	739	734	732	725	716	718	711	716	715	716
70	606	604	602	599	596	592	587	582	576	571	563	556	551	545	538	537	547	545	548
75	426	425	424	422	419	417	414	410	407	403	397	389	380	372	366	361	370	381	382
80	258	257	257	256	254	252	250	248	245	242	239	234	227	217	206	197	196	224	226
85	129	128	127	126	123	121	118	115	112	107	101	95.0	91.7	86.5	79.2	67.2	56.3	70.9	86.1
90	0.00	0.00	0.00	0.00	0.00	0.00	0.00	0.00	0.00	0.00	0.00	0.00	0.00	0.00	0.00	0.00	0.00	0.00	0.00

C Range: 0 - 360DEG  
C Interval: 5.0DEG  
Test Speed: HIGH  
Temperature:25.3DEG  
Operators:He Xueping  
Test Date:2017-06-15

γ Range: 0 - 90DEG  
γ Interval: 0.5DEG  
Test System:EVERFINE GO-2000A\_V1 SYSTEM V2.0.354  
Humidity:65.0%  
Test Distance:9.300m [K=1.0000]  
Remarks:

**LUMINOUS DISTRIBUTION INTENSITY DATA**

Test:U:219.8V I:0.2866A P:61.72W PF:0.9798 Freq:49.99Hz Lamp Flux:5921.9x1 lm		
NAME: 595*1195 Panel Light	TYPE:	WEIGHT:
SPEC.:	DIM.: 595*1195mm	SERIAL No.:
MFR.:	SUR.:545*1145mm	Shielding Angle:

Table--3

UNIT: cd

C( DEG) γ (DEG)	190	195	200	205	210	215	220	225	230	235	240	245	250	255	260	265	270	275	280
0	2046	2046	2046	2046	2046	2046	2046	2046	2046	2046	2046	2046	2046	2046	2046	2046	2046	2046	2046
5	2038	2037	2037	2037	2038	2038	2038	2038	2039	2039	2039	2039	2039	2039	2038	2038	2038	2038	2037
10	2012	2012	2013	2014	2014	2015	2016	2016	2016	2017	2018	2019	2019	2020	2020	2020	2019	2019	2018
15	1967	1969	1970	1971	1972	1974	1977	1978	1979	1981	1982	1984	1985	1984	1984	1983	1983	1982	1981
20	1906	1908	1909	1912	1915	1917	1920	1923	1924	1924	1923	1922	1922	1922	1921	1921	1920	1919	1917
25	1827	1829	1832	1835	1839	1842	1842	1841	1842	1844	1846	1849	1851	1853	1855	1855	1854	1852	1849
30	1732	1734	1738	1743	1745	1743	1744	1747	1752	1759	1766	1773	1779	1784	1787	1789	1788	1785	1781
35	1620	1624	1628	1630	1627	1630	1636	1646	1658	1670	1671	1672	1673	1673	1674	1673	1672	1670	1666
40	1494	1498	1501	1497	1500	1509	1522	1534	1535	1538	1542	1547	1551	1554	1556	1557	1556	1553	1548
45	1357	1360	1356	1357	1366	1382	1383	1387	1393	1402	1412	1421	1429	1435	1437	1436	1435	1432	1427
50	1207	1207	1204	1212	1224	1224	1229	1239	1252	1265	1273	1277	1279	1280	1281	1280	1279	1275	1271
55	1052	1045	1049	1059	1058	1065	1077	1089	1093	1098	1103	1109	1114	1118	1119	1119	1118	1114	1109
60	884	881	890	888	895	907	911	914	920	927	935	943	950	955	958	958	957	953	948
65	712	717	716	723	730	732	736	743	751	759	765	770	775	778	779	779	777	774	770
70	544	546	552	554	556	561	568	573	578	583	588	592	596	599	600	599	597	595	591
75	382	386	386	388	392	397	401	405	408	411	414	416	418	420	422	421	419	416	413
80	228	228	231	234	236	239	241	244	246	248	250	252	253	254	254	254	252	250	248
85	85.1	87.0	89.6	93.8	96.4	102	107	111	114	117	120	122	124	125	127	127	126	125	123
90	0.00	0.00	0.00	0.00	0.00	0.00	0.00	0.00	0.00	0.00	0.00	0.00	0.00	0.00	0.00	0.00	0.00	0.00	0.00

C Range: 0 - 360DEG  
 C Interval: 5.0DEG  
 Test Speed: HIGH  
 Temperature:25.3DEG  
 Operators:He Xueping  
 Test Date:2017-06-15

γ Range: 0 - 90DEG  
 γ Interval: 0.5DEG  
 Test System:EVERFINE GO-2000A\_V1 SYSTEM V2.0.354  
 Humidity:65.0%  
 Test Distance:9.300m [K=1.0000]  
 Remarks:

LUMINOUS DISTRIBUTION INTENSITY DATA

Test:U:219.8V I:0.2866A P:61.72W PF:0.9798 Freq:49.99Hz Lamp Flux:5921.9x1 lm		
NAME: 595*1195 Panel Light	TYPE:	WEIGHT:
SPEC.:	DIM.: 595*1195mm	SERIAL No.:
MFR.:	SUR.:545*1145mm	Shielding Angle:

Table--4 UNIT: cd

C (DEG) \ y (DEG)	285	290	295	300	305	310	315	320	325	330	335	340	345	350	355
0	2046	2046	2046	2046	2046	2046	2046	2046	2046	2046	2046	2046	2046	2046	2046
5	2037	2037	2036	2036	2036	2035	2035	2034	2034	2033	2033	2033	2033	2033	2034
10	2017	2015	2014	2012	2011	2009	2008	2007	2006	2005	2004	2003	2002	2002	2002
15	1979	1978	1976	1973	1971	1968	1967	1965	1961	1959	1957	1955	1954	1953	1953
20	1915	1913	1912	1910	1909	1908	1906	1902	1899	1897	1893	1890	1888	1887	1886
25	1845	1841	1836	1831	1826	1823	1820	1820	1818	1815	1812	1808	1805	1803	1803
30	1774	1766	1758	1748	1739	1730	1722	1717	1714	1715	1713	1710	1706	1704	1703
35	1662	1658	1654	1651	1647	1632	1619	1608	1599	1595	1597	1596	1594	1590	1589
40	1542	1534	1527	1519	1512	1507	1505	1492	1478	1468	1464	1466	1466	1464	1463
45	1421	1410	1398	1387	1375	1365	1357	1352	1352	1335	1324	1322	1326	1327	1325
50	1266	1260	1253	1247	1237	1222	1209	1198	1193	1193	1180	1171	1173	1177	1177
55	1103	1095	1087	1079	1071	1064	1058	1045	1033	1027	1028	1017	1013	1020	1021
60	941	932	923	913	903	894	886	880	875	863	857	860	850	853	859
65	765	758	752	744	737	727	716	708	701	698	691	686	689	683	693
70	586	581	575	569	562	556	549	543	534	527	523	520	517	517	522
75	409	405	401	397	392	387	382	377	372	367	362	358	356	357	357
80	245	242	239	236	232	228	223	220	218	214	210	208	205	205	206
85	121	119	115	112	108	104	99.0	93.4	86.7	78.6	75.1	70.2	68.7	68.3	67.8
90	0.00	0.00	0.00	0.00	0.00	0.00	0.00	0.00	0.00	0.00	0.00	0.00	0.00	0.00	0.00

C Range: 0 - 360DEG  
C Interval: 5.0DEG  
Test Speed: HIGH  
Temperature:25.3DEG  
Operators:He Xueping  
Test Date:2017-06-15

y Range: 0 - 90DEG  
y Interval: 0.5DEG  
Test System:EVERFINE GO-2000A\_V1 SYSTEM V2.0.354  
Humidity:65.0%  
Test Distance:9.300m [K=1.0000]  
Remarks: